

WAAS CH <b>61234</b> <b>W23A</b>	APP CRS <b>232°</b>	Rwy Idg <b>5505</b> TDZE <b>1523</b> Apt Elev <b>1545</b>
--	------------------------	---

# RNAV (GPS) RWY 23

SCOTT MUNI (SCX)

**T**  
**A** NA

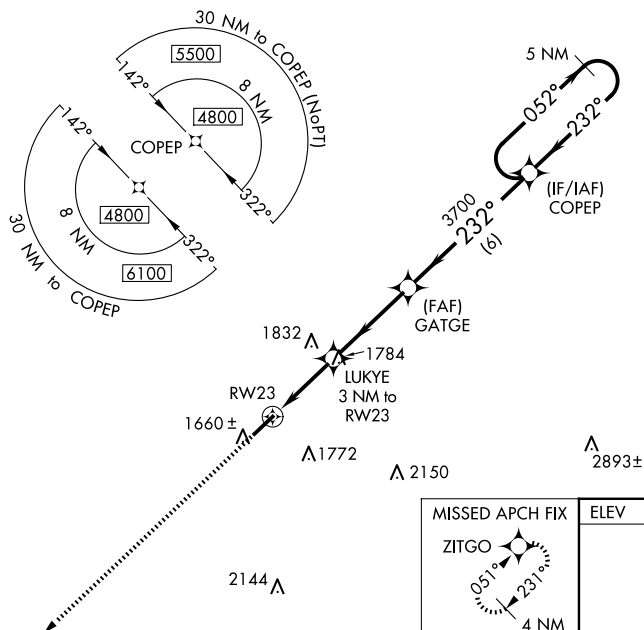
Night landing: Rwy 5 NA. For uncompensated Baro-VNAV systems, LNAV/VNAV NA below -18°C (0°F) or above 54°C (130°F). DME/DME RNP-0.3 NA. When local altimeter setting not received, use Monticello altimeter setting: increase LPV all Cats DA to 2005 feet, LNAV/VNAV all Cats DA to 2153 feet, LPV visibility ½ mile, LNAV/VNAV ¾ mile; increase all MDA 240 feet and LNAV Cat C/D visibility ¾ mile, Circling Cat B ¼ mile, Circling Cat C 1 mile and Circling Cat D ¾ mile. Inop table does not apply to LPV and LNAV all Cats. For inop ODALS, increase LNAV/VNAV Cat D visibility to 1 ¾ mile. For inop ODALS when using Monticello altimeter setting, increase LPV all Cats visibility to 1 ¾ mile, LNAV/VNAV all Cats to 2 ½ mile. When using Monticello altimeter setting, inop table does not apply to LNAV Cats A/C/D. VDP and Baro-VNAV NA when using Monticello altimeter setting.

ODALS



**MISSED APPROACH:**  
Climb to 3900 direct  
ZITGO and hold.

AWOS-3 <b>135.025</b>	INDIANAPOLIS CENTER <b>124.625 371.925</b>	UNICOM <b>122.8 (CTAF) 0</b>
--------------------------	---	---------------------------------



**\*LNAV only.**

**\*1.5 NM to RW23**

**RW23**

**LUKYE  
3 NM  
to RW23**

**GATGE  
3700**

**COPEP  
5 NM  
Holding Pattern**

**2500**

**3700**

**232°**

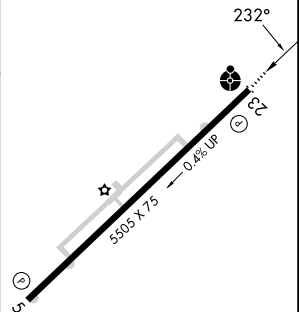
**052°**

**232°**

**4800**

**GP 3.00°  
TCH 52**

CATEGORY	A	B	C	D
LPV DA		1773-1	250 (300-1)	
LNAV/VNAV DA		1921-1½	398 (400-1½)	
LNAV MDA	2040-1	517 (500-1)	2040-1½	517 (500-1½)
<b>CIRCLING</b>	2040-1	495 (500-1)	2200-1¼ 655 (700-1¼)	2260-2¼ 715 (800-2¼)



MIRL Rwy 5-23 **L**  
REIL Rwy 5 and 23 **L**