

WAAS CH 90142 W36A	APP CRS 355°	Rwy Idg TDZE Apt Elev	4986 901 925
--	------------------------	-----------------------------	---

RNAV (GPS) RWY 36
CUSHING MUNI (CUH)

RNP APCH.

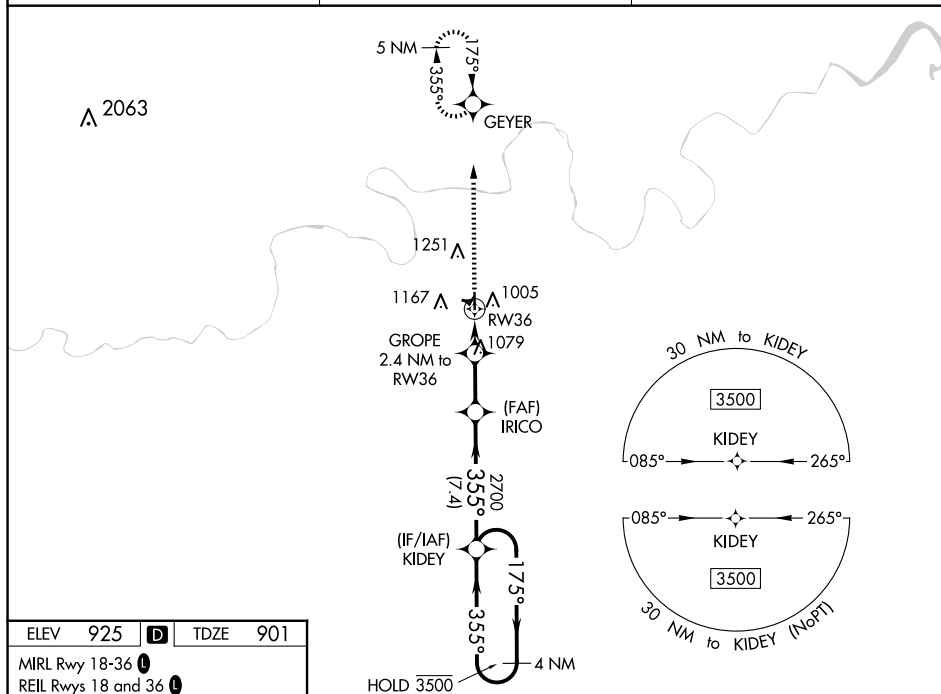


For uncompensated Baro-VNAV systems, LNAV/VNAV NA below -16°C or above 54°C. Circling NA to Rwy's 2, 8, 11, 20, 26, and 29.

MISSED APPROACH: Climb to 3500 direct GEYER and hold, continue to climb-in-hold to 3500.

AWOS-3PT
118.25

KANSAS CITY CENTER
127.8 319.1

UNICOM
122.8 (CTAF) **L**

3500 GEYER

VGS and RNAV glidepath not coincident (VGS Angle 3.00°/TCH 33).

IRICO 2700

GROPE 2.4 NM to RW36

1680*

2700

35°

175°

350°

3500

4 NM Holding Pattern

KIDEY

GP 3.00° TCH 50

* RNAV only.

2.4 NM

3.2 NM

7.4 NM

CATEGORY	A	B	C	D
LPV DA	1151- $\frac{7}{8}$		250 (300- $\frac{7}{8}$)	
LNAV/VNAV DA	1284-1 $\frac{1}{4}$		383 (400-1 $\frac{1}{4}$)	
LNAV MDA	1340-1	439 (500-1)	1340-1 $\frac{1}{4}$	439 (500-1 $\frac{1}{4}$)
C CIRCLING	1600-1	675 (700-1)	1600-2 675 (700-2)	1600-2 $\frac{1}{4}$ 675 (700-2 $\frac{1}{4}$)