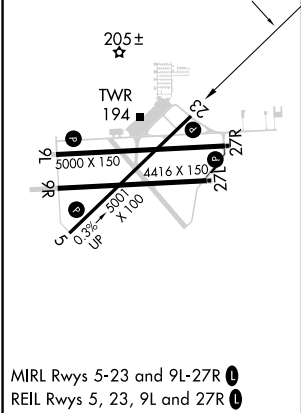
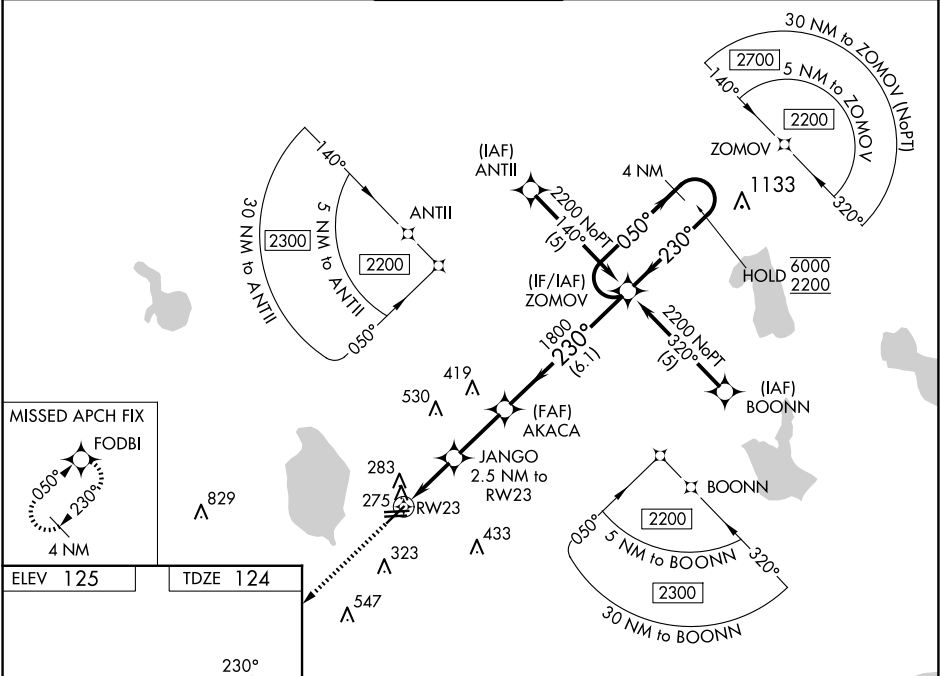


WAAS CH <b>63112</b> <b>W23A</b>	APP CRS <b>230°</b>	Rwy Idg TDZE Apt Elev	<b>5001</b> <b>124</b> <b>125</b>
--	------------------------	-----------------------------	---

RNAV (GPS) RWY 23  
BARTOW EXEC (BOW)

RNP APCH. ▼ Rwy 23 helicopter visibility reduction below ¾ SM NA. When local altimeter setting not received, use Tampa Intl altimeter setting and increase LPV DA to 560 feet, LNAV/VNAV DA to 681 feet and all MDA 120 feet, increase LPV all Cats visibility ¼ SM, LNAV/VNAV all Cats ½ SM, LNAV Cat C ¼ SM, Cat D ½ SM. For uncompensated Baro-VNAV systems, LNAV/VNAV NA below -15°C or above 54°C. VDP and Baro-VNAV NA when using Tampa Intl altimeter setting.	MISSED APPROACH: Climb to 2300 direct FODBI and hold.
--	---

AWOS-3 <b>123.775</b>	TAMPA APP CON <b>120.65 290.3</b>	BARTOW TOWER ★ <b>121.2 0</b> (CTAF)	GND CON <b>121.9</b>	UNICOM <b>122.95</b>
--------------------------	--------------------------------------	---	-------------------------	-------------------------



ELEV 125	TDZE 124	2300 FODBI	VGSI and RNAV glidepath not coincident (VGSI Angle 3.50/TCH 48).	AKACA	ZOMOV	4 NM Holding Pattern
*LNAV only.		JANGO 2.5 NM to RW23	*1.1 NM to RW23	1800	050° → 6000 ← 230° 2200	GP 3.00° TCH 60
1.1		1.4	2.5 NM	6.1 NM		
CATEGORY	A	B	C	D		
LPV DA	454-1 330 (400-1)					
LNAV/VNAV DA	575-1½ 451 (500-1½)					
LNAV MDA	580-1 456 (500-1)		580-1½ 456 (500-1½)		580-1½ 456 (500-1½)	

SE-3, 10 JUL 2025 to 07 AUG 2025

SE-3, 10 JUL 2025 to 07 AUG 2025