

APP CRS	Rwy Idg	4304
116°	TDZE	869
	Apt Elev	869

RNAV (GPS) RWY 11

LUCE COUNTY (ERY)

RNP APCH - GPS.

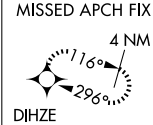
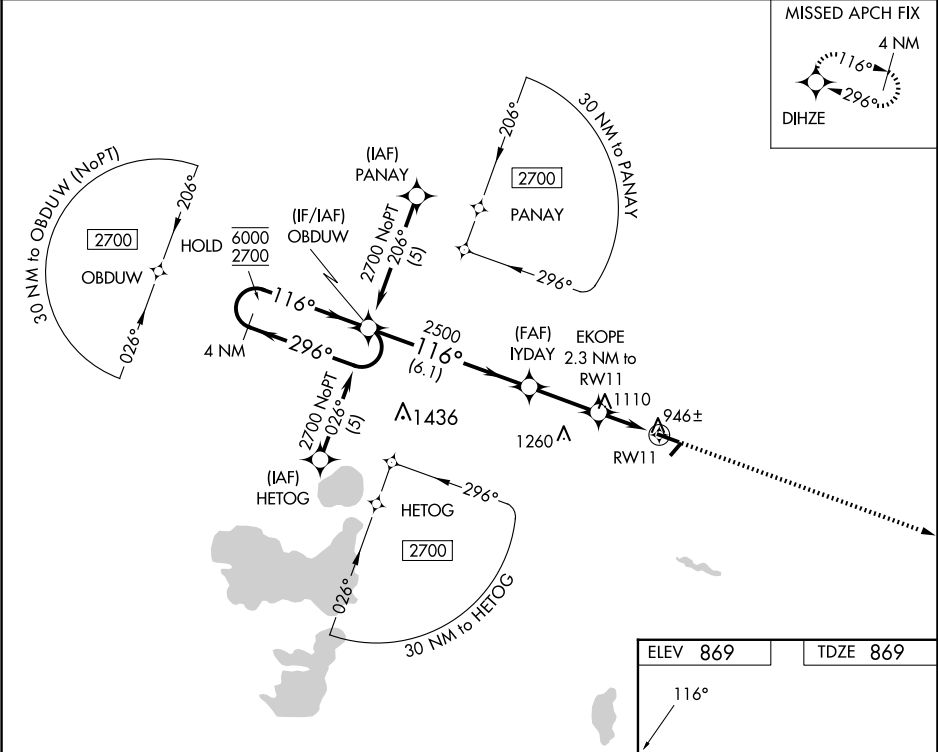
- ⚠

Circling NA to Rwys 4 and 22. Rwy 11 helicopter visibility reduction below ¾ SM NA.
- ⚠

For uncompensated Baro-VNAV systems, LNAV/VNAV NA below -16°C or above 54°C.

MISSED APPROACH:
Climb to 2700 direct
DIHZE and hold.

AWOS-3P 119.525	MINNEAPOLIS CENTER 134.6 354.05	UNICOM 122.8 (CTAF) 0
--------------------	------------------------------------	--------------------------



4 NM Holding Pattern		OBDUW		2700 DIHZE	
6000 ← 296°		2700 → 116°		116°	
GP 3.00° TCH 40		IYDAY 2500		EKOPE 2.3 NM to RW11	
2500		1640		1.6 NM to RW11	
6.1 NM		2.6 NM		0.7 NM	
A		B		C	
LNAV/DA		1259-1½		390 (400-1½)	
LNAV MDA		1420-1 551 (600-1)		1420-1½ 551 (600-1½)	
CIRCLING		1420-1 551 (600-1)		1460-1½ 591 (600-1½) 1560-2¼ 691 (700-2¼)	

