

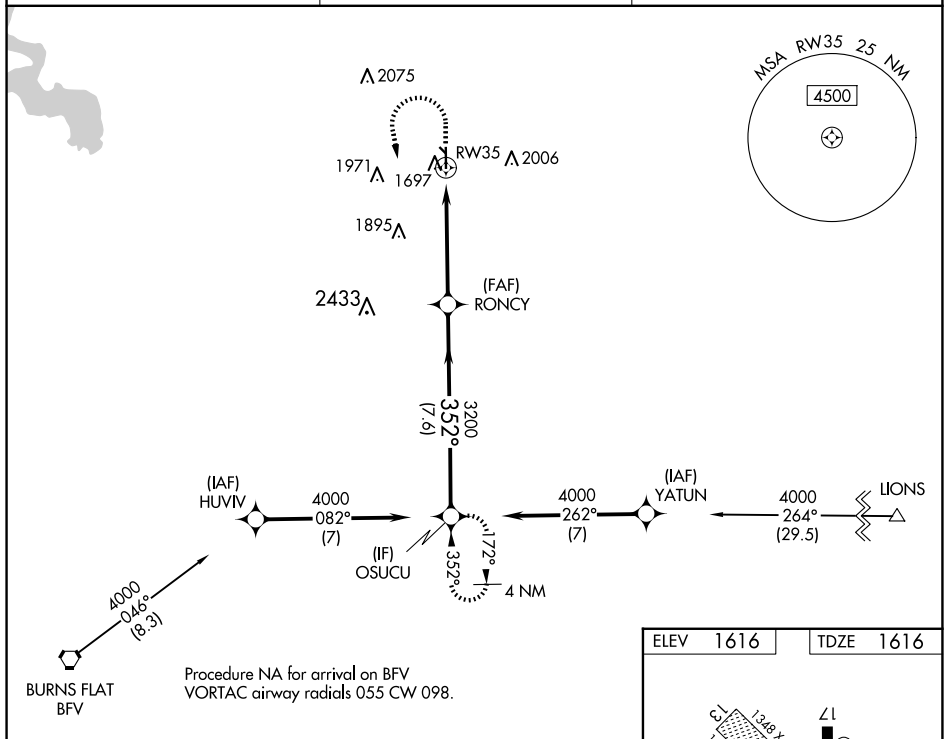
WAAS CH <b>70423</b> <b>W35A</b>	APP CRS <b>352°</b>	Rwy Ldg <b>4305</b> TDZE <b>1616</b> Apt Elev <b>1616</b>
--	------------------------	---

RNAV (GPS) RWY 35  
CLINTON RGNL (CLK)

**⚠ DME/DME RNP-0.3 NA.** For uncompensated Baro-VNAV systems, LNAV/VNAV NA below -12°C (111°F) or above 54°C (130°F). Circling NA to Rwy 13 and 31. When local altimeter setting not received, use Weatherford altimeter setting: Increase DA to 1902 and all visibilities ½ mile; increase all MDA 40 feet and visibility Cat C ¼ mile. Baro-VNAV and VDP NA when using Weatherford altimeter setting.

**MISSED APPROACH:** Climb to 2400 then climbing left turn to 4000 direct OSUCU and hold.

AWOS-3 <b>119.225</b>	FORT WORTH CENTER <b>128.4 269.37</b>	UNICOM <b>122.8</b> (CTAF) <b>0</b>
--------------------------	--	--



2400  
↑

4000  
↖

OSUCU

VGSI and RNAV glidepath not coincident  
(VGSI Angle 3.00/TCH 40).

OSUCU

4000

\*RNAV only.

\*1.3 NM to RW35

RW35

1.3 NM

3.6 NM

7.6 NM

3200

352°

3200

GP 3.00°  
TCH 40°

