

| | | |
|--|------------------------|---|
| WAAS CH 93922 W17A | APP CRS 172° | Rwy Ldg TDZE 1616 Apt Elev 1616 |
|--|------------------------|---|

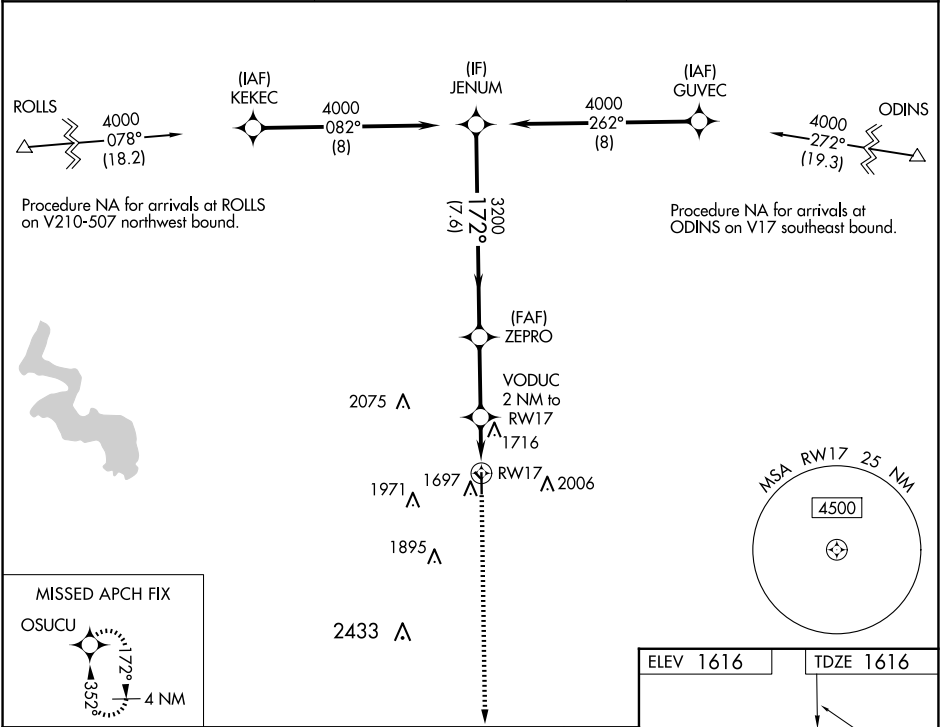
RNAV (GPS) RWY 17

CLINTON RGNL (CLK)

⚠ DME/DME RNP-0.3 NA. For uncompensated Baro-VNAV systems, LNAV/VNAV NA below -12°C (11°F) or above 54°C (130°F). Circling NA to Rwy 13 and 31. When local altimeter setting not received, use Weatherford altimeter setting; Increase DA to 1898 and all visibilities ½ mile; increase all MDA 40 feet and visibility Cat C ¼ mile. Baro-VNAV and VDP NA when using Weatherford altimeter setting.

MISSED APPROACH: Climb to 4000 direct OSUCU and hold.

| | | |
|--------------------------|--|---------------------------------|
| AWOS-3 119.225 | FORT WORTH CENTER 128.4 269.37 | UNICOM 122.8 (CTAF) 0 |
|--------------------------|--|---------------------------------|



| | | | | | | | |
|--------------------|-----------------------|-----------------------|-----------------------|-----------------------|----|-------------|------------|
| JENUM | | ZEPRO | | VODUC 2 NM to RW17 | | 4000 ↑ | OSUCU ✦ |
| 4000 | | 3200 | | *2280 | | *LNAV only. | |
| GP 3.00° TCH 40 | | 3200 | | *1 NM to RW17 | | RW17 | |
| 7.6 NM | | 2.9 NM | | 1 NM | | 1 NM | |
| CATEGORY | A | B | C | D | | | |
| LPV DA | 1866-7/8 | | 250 (300-7/8) | | NA | | |
| LNAV/ VNAV DA | 1866-7/8 | | 250 (300-7/8) | | NA | | |
| LNAV MDA | 1980-1 | | 364 (400-1) | | NA | | |
| CIRCLING | 2100-1 484 (500-1) | 2220-1 604 (700-1) | 2320-2 704 (800-2) | NA | | | |

