

| | | |
|--|------------------------|---|
| WAAS CH 82019 W02A | APP CRS 024° | Rwy Idg 5000 TDZE 890 Apt Elev 892 |
|--|------------------------|---|

RNAV (GPS) RWY 2

NEVADA MUNI (NVD)

RNP APCH - GPS.

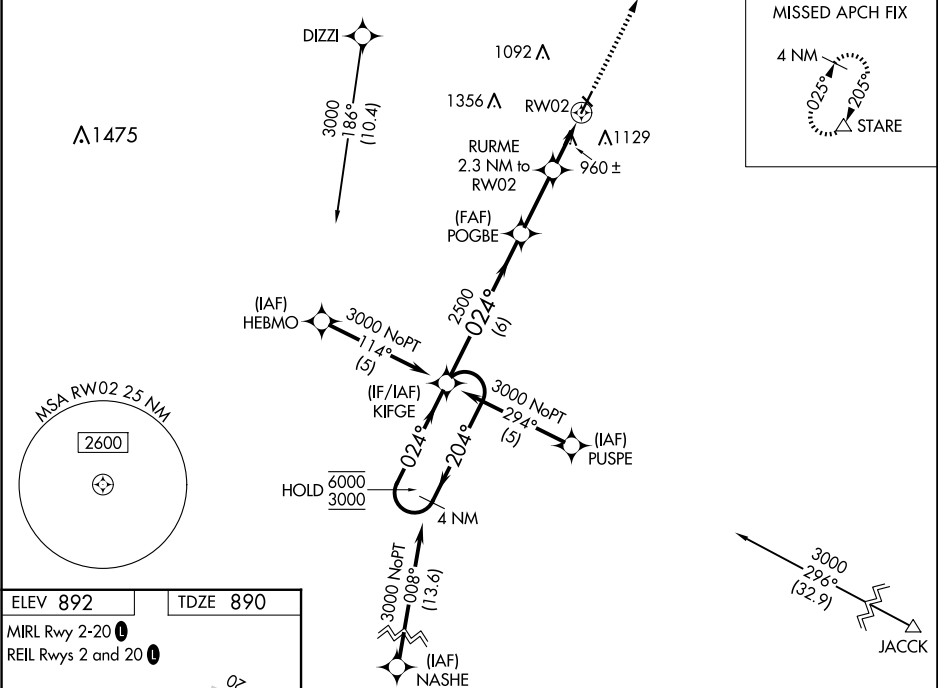
▼

▲ NA

Circling NA to Rwy 13 and 31. Baro-VNAV and VDP NA when using Joplin altimeter setting. For uncompensated Baro-VNAV systems, LNAV/VNAV NA below -16°C or above 54°C. When local altimeter setting not received, use Joplin altimeter setting: increase LPV DA to 1200 feet; increase LNAV/VNAV DA to 1329 feet and all visibilities ¼ SM; increase all MDAs 120 feet and LNAV visibility Cat C ¾ SM, and Circling visibility Cat C ¼ SM.

MISSED APPROACH:
Climb to 3000 direct STARE and hold.

| | | |
|----------------------------|---|---------------------------------|
| AWOS-3PT 119.175 | KANSAS CITY CENTER 125.55 327.0 | UNICOM 122.8 (CTAF) 0 |
|----------------------------|---|---------------------------------|



| | | | |
|----------------------|-----------------------|--|-------------------------|
| ELEV 892 | | TDZE 890 | |
| MRL Rwy 2-20 0 | | REIL Rwy 2 and 20 0 | |
| 4 NM Holding Pattern | | VGSi and RNAV glidepath not coincident (VGSi Angle 3.00/TCH 40). | |
| 6000 ← 204° | | 3000 STARE | |
| 3000 ← 024° | | 3000 ↑ | |
| GP 3.00° | | POGBE 2500 | |
| TCH 45 | | RURME 2.3 NM to RW02 | |
| | | 0.9 NM to RW02 | |
| | | RW02 | |
| | | 6 NM | |
| | | 2.6 NM | |
| | | 1.4 NM | |
| | | 0.9 NM | |
| CATEGORY | A | B | C |
| LPV DA | 1090-1 | 200 (200-1) | NA |
| LNAV/VNAV DA | 1219-1 | 329 (400-1) | NA |
| LNAV MDA | 1220-1 | 330 (400-1) | NA |
| CIRCLING | 1260-1 368 (400-1) | 1440-1 548 (600-1) | 1440-1½ 548 (600-1½) |