

WAAS CH 78402 W12A	APP CRS 123°	Rwy Idg TDZE Apt Elev	3588 1051 1051
--	------------------------	-----------------------------	---

RNAV (GPS) RWY 12

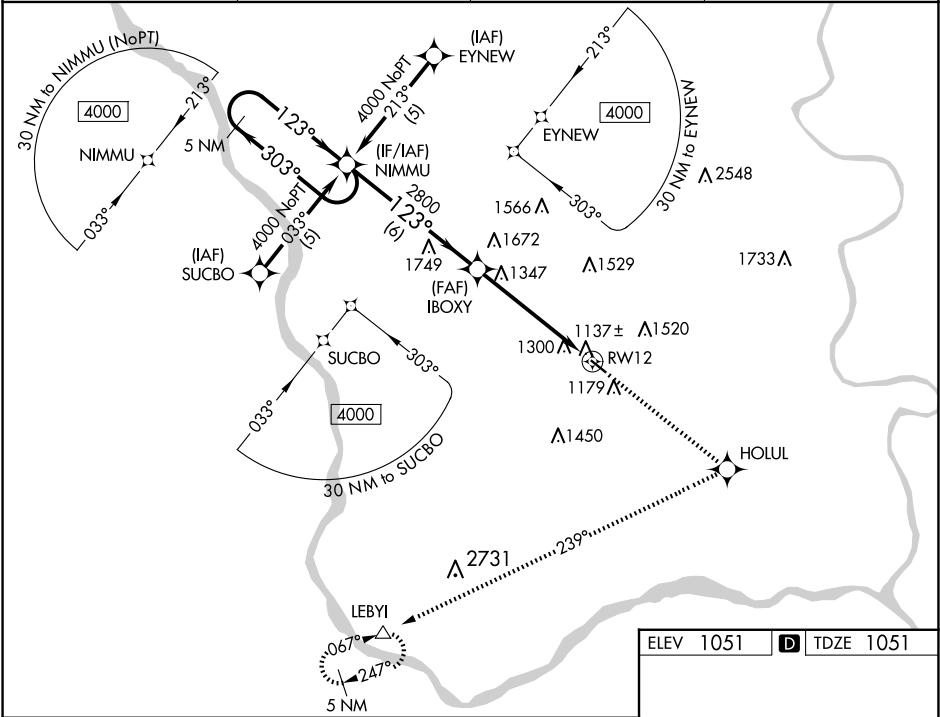
MILLARD (MLE)

⚠

DME/DME RNP-0.3 NA. If local altimeter setting not received, use Council Bluffs Muni altimeter setting and increase all DAs/MDAs 80 feet. Baro-VNAV NA when using Council Bluffs Muni altimeter setting. For uncompensated Baro-VNAV systems, LNAV/VNAV NA below -17°C (2°F) or above 54°C (130°F). Visibility reduction by helicopters NA.

MISSED APPROACH: Climb to 4000 direct HOLUL and right turn via 239° track to LEBYI and hold.

AWOS-3 118.25	OMAHA APP CON 135.875 354.05	CLNC DEL 125.4	UNICOM 123.0 (CTAF) 0
-------------------------	--	--------------------------	---------------------------------



5 NM

Holding Pattern

NIMMU

4000

←303°

→123°

GP 3.00°

TCH 39°

IBOXY

2800

6 NM

5.3 NM

RW12

4000

↑

HOLUL

✧

tr 239°

↷

LEBYI

△

CATEGORY	A	B	C	D
LPV DA	1387-1¼	336 (400-1¼)	NA	
LNAV/VNAV DA	1668-2	617 (700-2)	NA	
LNAV MDA	1660-1	609 (700-1)	NA	
CIRCLING	1700-2 649 (700-2)	1720-2 669 (700-2)	NA	

ELEV 1051 **D** TDZE 1051

REIL Rwy 12 **0**
MIRL Rwy 12-30 **0**