

WAAS CH 61335 W35A	APP CRS 348°	Rwy Idg TDZE 927 Apt Elev 936	5002
--	------------------------	---	-------------

RNAV (GPS) RWY 35

LAWRENCEBURG/LAWRENCE COUNTY (FLEEMAN FLD) (2M2)

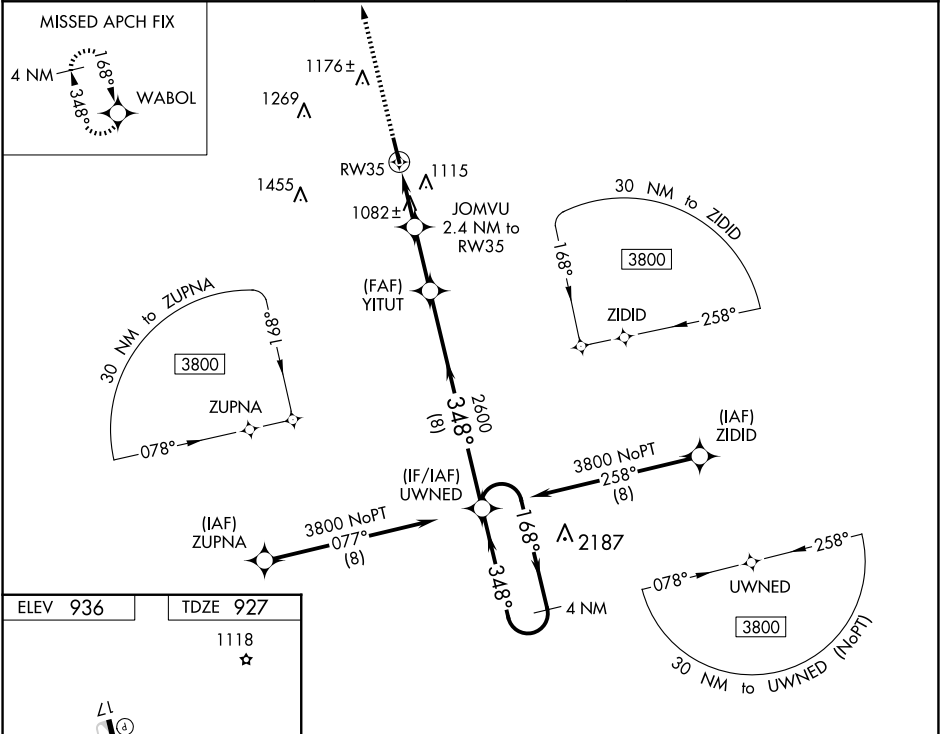
▼

▲NA

Circling Rwy 17 NA at night. For uncompensated Baro-VNAV systems, LNAV/VNAV NA below -16°C (5°F) or above 54°C (130°F). DME/DME RNP-0.3 NA. When local altimeter setting not received, use Huntsville Intl-Carl T Jones Fld altimeter setting and increase all DA 142 feet and all MDA 140 feet; increase LPV all Cats visibility ¼ mile, LNAV/VNAV all Cats visibility ⅓ mile. Rwy 17 helicopter visibility reduction below 1 SM NA. Rwy 35 helicopter visibility reduction below ¾ SM NA.

MISSED APPROACH:
Climb to 3700 direct WABOL and hold.

AWOS-3 120.175	MEMPHIS CENTER 125.85 379.25	UNICOM 122.8 (CTAF)
--------------------------	--	-------------------------------



ELEV 936	TDZE 927	1118
<div><div>L1</div><div>5002 X 100</div><div>35</div><div>348°</div><div>MIRL Rwy 17-35</div><div>REIL Rws 17 and 35</div></div>		
3700	WABOL	VGSI and RNAV glidepath not coincident (VGSI Angle 3.00/TCH 24).
*LNAV only.		
<div><div>YITUT</div><div>JOMVU 2.4 NM to RW35</div><div>RW35</div><div>1800</div><div>2600</div><div>348°</div><div>168°</div><div>3800</div><div>348°</div><div>UWNED</div><div>4 NM Holding Pattern</div><div>GP 3.20°</div><div>TCH 60</div></div>		
CATEGORY	A	B
LPV DA	1293-1⅛	366 (400-1⅛)
LNAV/VNAV DA	1354-1¼	427 (500-1¼)
LNAV MDA	1340-1	413 (500-1)
CIRCLING	1500-1	564 (600-1)