

WAAS CH 70337 W17A	APP CRS 168°	Rwy Idg TDZE 936 Apt Elev 936	5002
--	------------------------	---	-------------

RNAV (GPS) RWY 17

LAWRENCEBURG/LAWRENCE COUNTY (FLEEMAN FLD) (2M2)

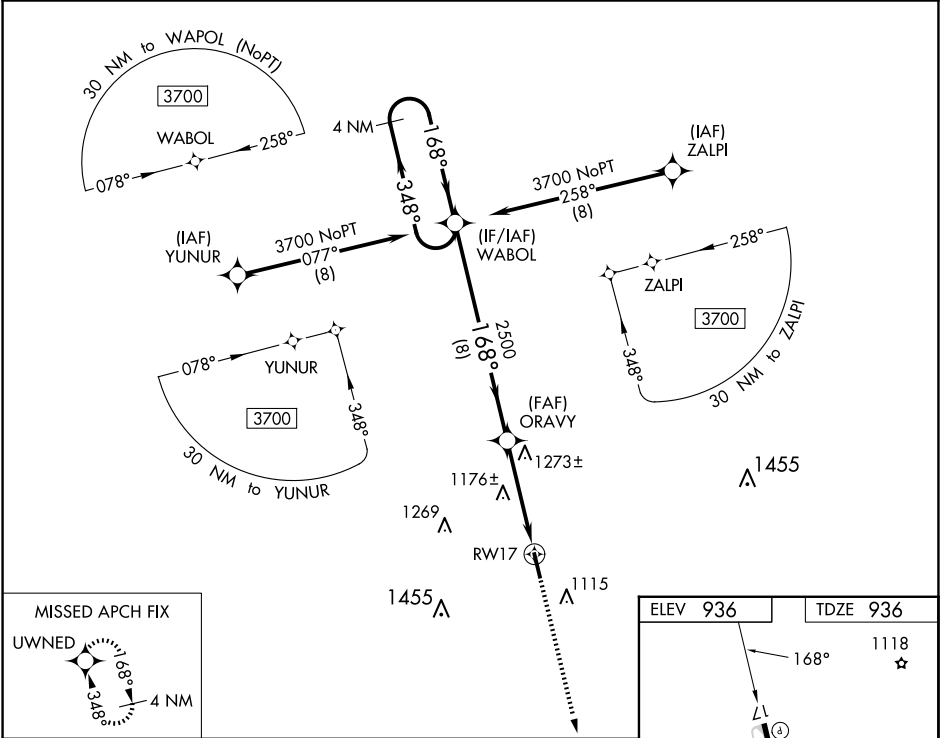
▼

▲ NA

For uncompensated Baro-VNAV systems, LNAV/VNAV NA below -15°C (5°F) or above 54°C (130°F). DME/DME RNP-0.3 NA. When local altimeter setting not received, use Huntsville Intl-Carl T Jones Fld altimeter setting and increase all DA 142 feet and all MDA 140 feet; increase LPV all Cats visibility ¼ mile, LNAV/VNAV all Cats visibility ⅓ mile. Straight-in Rwy 17 NA at night, Circling Rwy 17 NA at night. Rwy 17 helicopter visibility reduction below 1 SM NA.

MISSED APPROACH:
Climb to 3800 direct UWNED and hold.

AWOS-3 120.175	MEMPHIS CENTER 125.85 379.25	UNICOM 122.8 (CTAF)
--------------------------	--	-------------------------------



4 NM Holding Pattern

WABOL

3700

348°

168°

GP 3.40° TCH 60

2500

8 NM

4.2 NM

RW17

3800

UWNED

VGSI and RNAV glidepath not coincident (VGSI Angle 3.00/TCH 25).

ORAVY

2500

CATEGORY	A	B	C	D
LPV DA	1225-1	289 (300-1)	NA	
LNAV/VNAV DA	1394-1 ³ / ₈	458 (500-1 ³ / ₈)	NA	
LNAV MDA	1540-1	604 (700-1)	NA	
CIRCLING	1540-1	604 (700-1)	NA	

ELEV 936

TDZE 936

1118

168°

35

5002 X 100

MIRL Rwy 17-35
REIL Rwy 17 and 35