

WAAS
CH **50507**
W36A

APP CRS
002°

Rwy Idg
TDZE
Apt Elev

5000
298
304

RNAV (GPS) RWY 36

DEXTER MUNI (DXE)

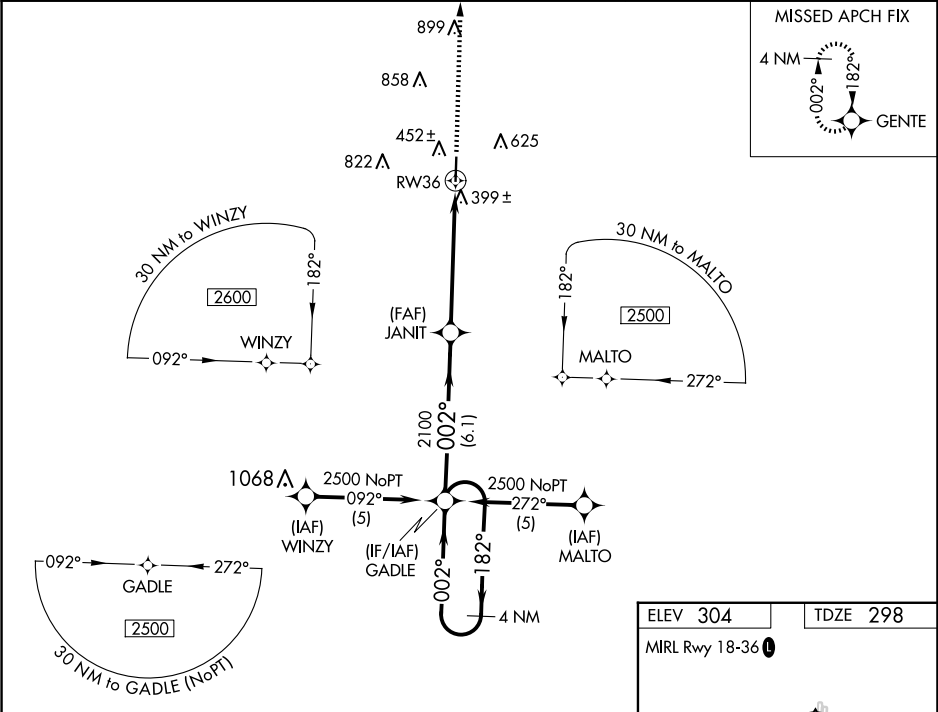
RNP APCH.

▼
NA

Baro-VNAV NA. Use Poplar Bluff altimeter setting, when not received use Cape Girardeau Rgnl altimeter setting and increase all DA 33 feet and all MDA 40 feet; increase LPV and LNAV/VNAV all Cats visibility ¼ SM, increase LNAV Cats C/D visibility ¼ SM.

MISSED APPROACH: Climb to 2500 direct GENTE and hold.

POF ASOS 124.225	MEMPHIS CENTER 133.65 292.15	UNICOM 122.7 (CTAF) 0
----------------------------	--	---------------------------------



4 NM Holding Pattern

2500 ← 182°
002° →

GP 3.00°
TCH 40

VGSI and RNAV glidepath not coincident (VGSI Angle 3.01/TCH 49).

2500

GENTE

JANIT

002°

2100

RW36

6.1 NM

5.5 NM

CATEGORY	A	B	C	D
LPV DA	595-1 297 (300-1)			
LNAV/VNAV DA	795-1¾ 497 (500-1¾)			
LNAV MDA	880-1 582 (600-1)		880-1½ 582 (600-1½)	880-1¾ 582 (600-1¾)

ELEV 304

TDZE 298

MIRL Rwy 18-36 0

8 L

5000 X 100

36

002°