

VORTAC UKW 117.15 Chan 118 (Y)	APP CRS 175°	Rwy Idg TDZE Apt Elev 864	5005 842 864
--	------------------------	--	---

VOR/DME RWY 18
BRIDGEPORT MUNI (XBP)

Visibility reduction by helicopters NA. When local altimeter setting not received, use Decatur altimeter setting and increase all MDA 60 feet.

MISSED APPROACH: Climbing right turn to 2800 via UKW VORTAC R-175 to SKYLA/UKW 16 DME and hold.

AWOS-3PT 119.225	FORT WORTH CENTER 127.0 360.6	UNICOM 123.0 (CTAF)
----------------------------	---	-------------------------------

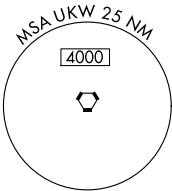
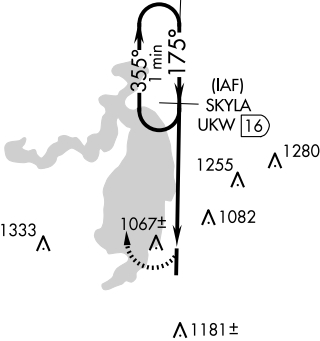
Procedure NA for arrival on UKW VORTAC airway radials 184 CW 233.

3000 NoPT
175° (6)

IAF
BOWIE
117.15 UKW
Chan 118 (Y)

3000 Δ

Δ 2859

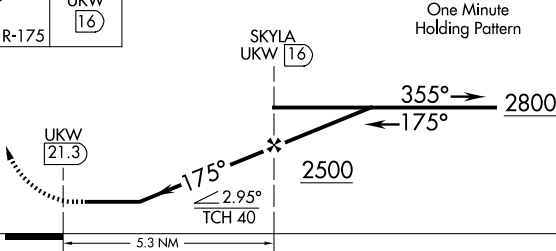


Δ 2547

2800
UKW R-175

SKYLA
UKW
16

One Minute
Holding Pattern



CATEGORY	A	B	C	D
S-18	1440-1 598 (600-1)	1440-1¼ 598 (600-1¼)	NA	
CIRCLING	1480-1 616 (700-1)	1480-1¼ 616 (700-1¼)	NA	

ELEV 864 TDZE 842

175°

81

1.1% UP

5005 X 75

36

MRL Rwy 18-36

SC-2, 10 JUL 2025 to 07 AUG 2025

SC-2, 10 JUL 2025 to 07 AUG 2025