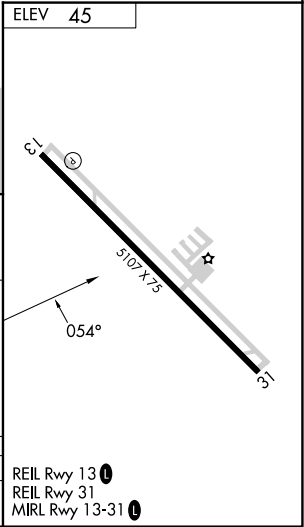
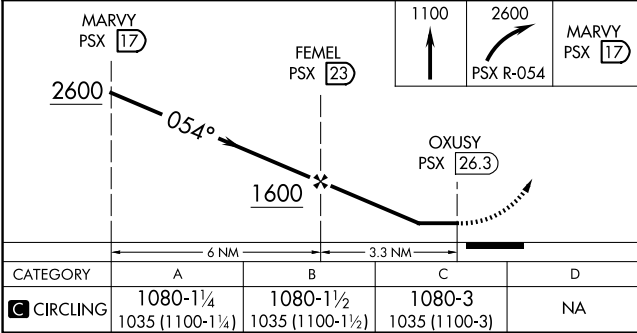
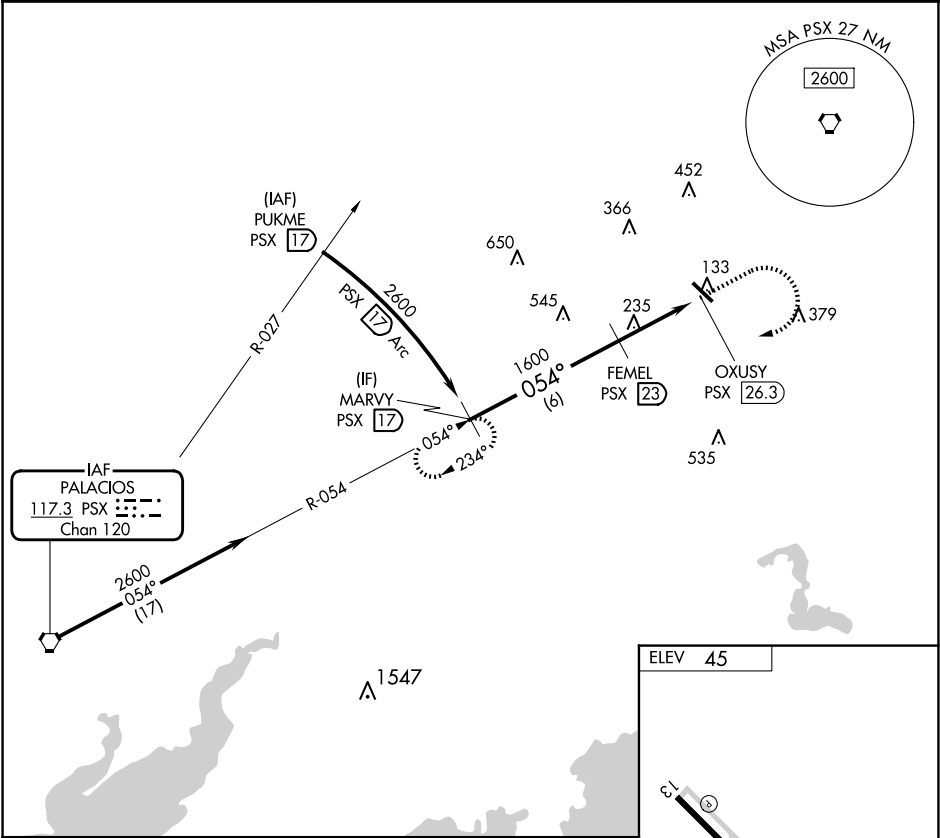


VORTAC PSX 117.3 Chan 120	APP CRS 054°	Rwy Idg TDZE Apt Elev N/A N/A 45
-----------------------------------------------	------------------------	----------------------------------------------------------------------

VOR-A
BAY CITY RGNL (BYT)

- ▼** Rwy 13, 31 helicopter visibility reduction below 1 SM NA.
⚠ DME required. When local altimeter setting not received, use Palacios altimeter setting and increase all MDA 80 feet.
- MISSED APPROACH: Climb to 1100 then climbing right turn to 2600 on PSX VORTAC R-054 to MARVY/17 DME and hold.

AWOS-3PT 118.075	HOUSTON CENTER 128.6 360.8	UNICOM 122.8 (CTAF) 📶
----------------------------	--------------------------------------	----------------------------------------



SC-5, 10 JUL 2025 to 07 AUG 2025

SC-5, 10 JUL 2025 to 07 AUG 2025