

WAAS CH 78326 W31A	APP CRS 311°	Rwy Idg 5107 TDZE 44 Apt Elev 45
--	------------------------	---

RNAV (GPS) RWY 31

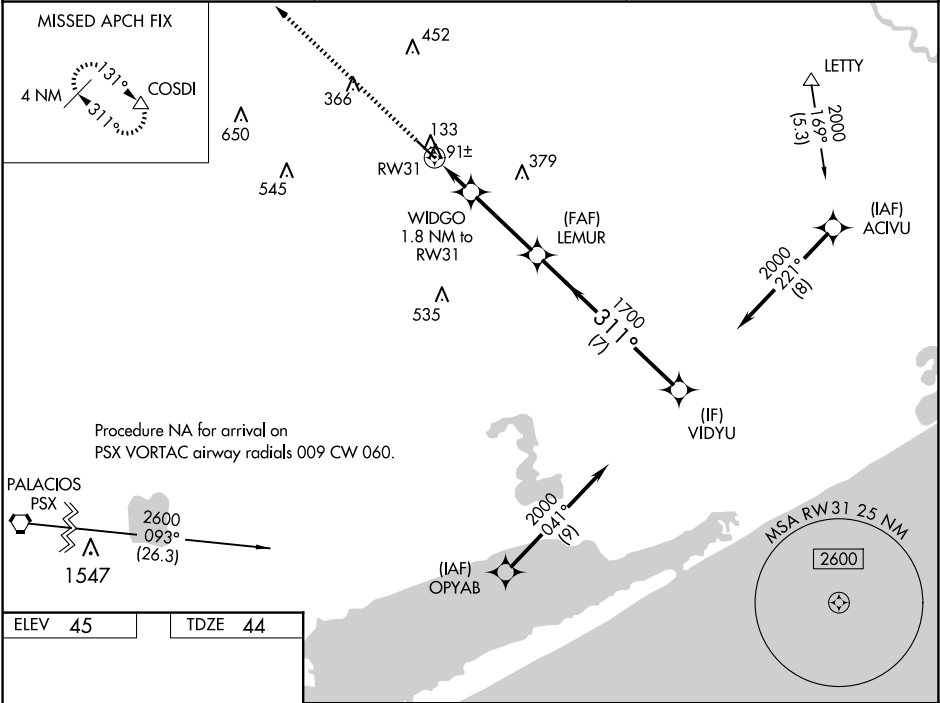
BAY CITY RGNL (BYY)

⚠

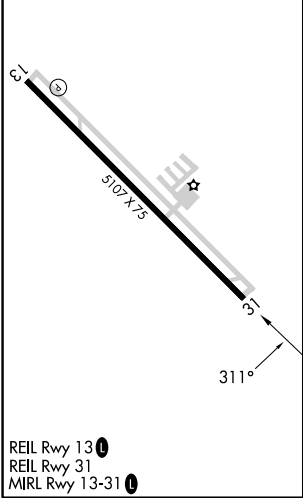
For uncompensated Baro-VNAV systems, LNAV/VNAV NA below -15°C (5°F) or above 54°C (130°F). Rwy 13, 31 helicopter visibility reduction below 1 SM NA. DME/DME RNP-0.3 NA. When local altimeter setting not received, use Palacios altimeter setting and increase all DA 63 feet and all MDA 80 feet; increase LNAV visibility Cat C ¼ mile. VDP and Baro-VNAV N/A when using Palacios altimeter setting.

MISSED APPROACH: Climb to 2000 direct COSDI and hold.

AWOS-3PT 118.075	HOUSTON CENTER 128.6 360.8	UNICOM 122.8 (CTAF) 0
----------------------------	--------------------------------------	---------------------------------



ELEV 45	TDZE 44
----------------	----------------



<div><div>2000</div><div>↑</div></div>		<div><div>COSDI</div><div>△</div></div>			
*LNAV only.		WIDGO 1.8 NM to RW31		LEMUR 1700	
*0.9 NM to RW31		RW31		311°	
RW31		640*		1700	
0.9		0.9		3.3 NM	
				7 NM	
				GP 3.00° TCH 45	
CATEGORY		A		B	
LPV DA		294-1		250 (300-1)	
LNAV/VNAV DA		294-1		250 (300-1)	
LNAV MDA		360-1		316 (400-1)	
CIRCLING		500-1		620-1½ 575 (600-1½)	
		455 (500-1)		NA	

SC-5, 10 JUL 2025 to 07 AUG 2025

SC-5, 10 JUL 2025 to 07 AUG 2025