

HOUSTON DEP CON
128.6 360.85

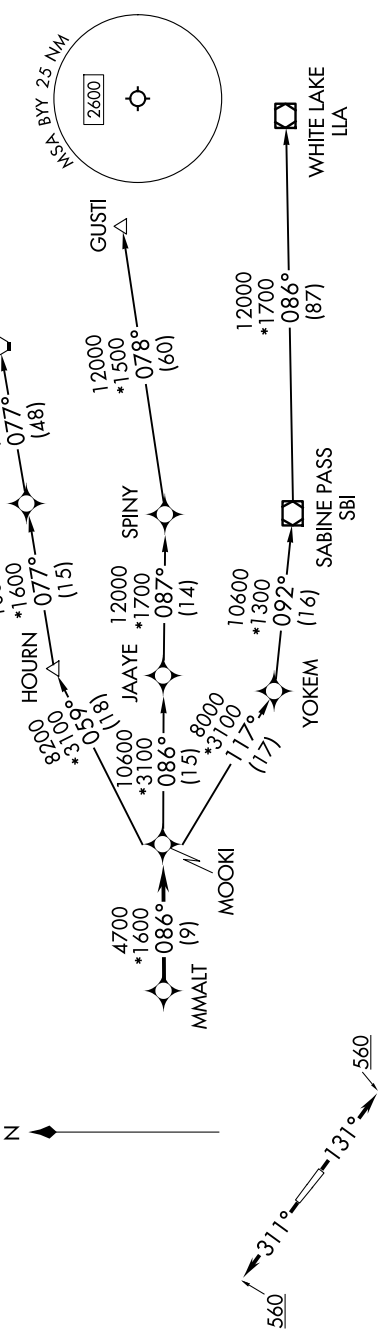
RNAV 1 - DME/DME/IRU or GPS.
RADAR required.

(MMALT7.MMALT) 23334
MMALT SEVEN DEPARTURE (RNAV)

AL-5824 (FAA)

BAY CITY RGNL (BYY)
BAY CITY, TEXAS

TOP ALTITUDE:
ASSIGNED BY ATC



NOTE: GUSTI and LCH Transitions ATC assigned only for aircraft departing AXH, EFD, GLS, HPY, IWS, LBX, LVJ, SGR, TME, T00, T41 and 54T.

TAKEOFF MINIMUMS
Rwys 13, 31: Standard with minimum
climb of 500' /NM to 560.

NOTE: Chart not to scale.

DEPARTURE ROUTE DESCRIPTION

TAKEOFF RUNWAY 13: Climb on heading 131° to 560, for RADAR vectors to MMALT, thence, . . .
TAKEOFF RUNWAY 31: Climb on heading 311° to 560, for RADAR vectors to MMALT, thence, . . .
. . . on track 086° to MOOKI, then on (transition). Maintain ATC assigned altitude.
Expect filed altitude 10 minutes after departure.

GUSTI TRANSITION (MMALT7.GUSTI)
LAKE CHARLES TRANSITION (MMALT7.LCH)
WHITE LAKE TRANSITION (MMALT7.ILA)

MMALT SEVEN DEPARTURE (RNAV)
(MMALT7.MMALT) 30NOV23

BAY CITY, TEXAS
BAY CITY RGNL (BYY)