

APP CRS	Rwy Idg	4002
359°	TDZE	533
	Apt Elev	538

RNAV (GPS) RWY 36

SPARTA COMMUNITY-HUNTER FLD (SAR)

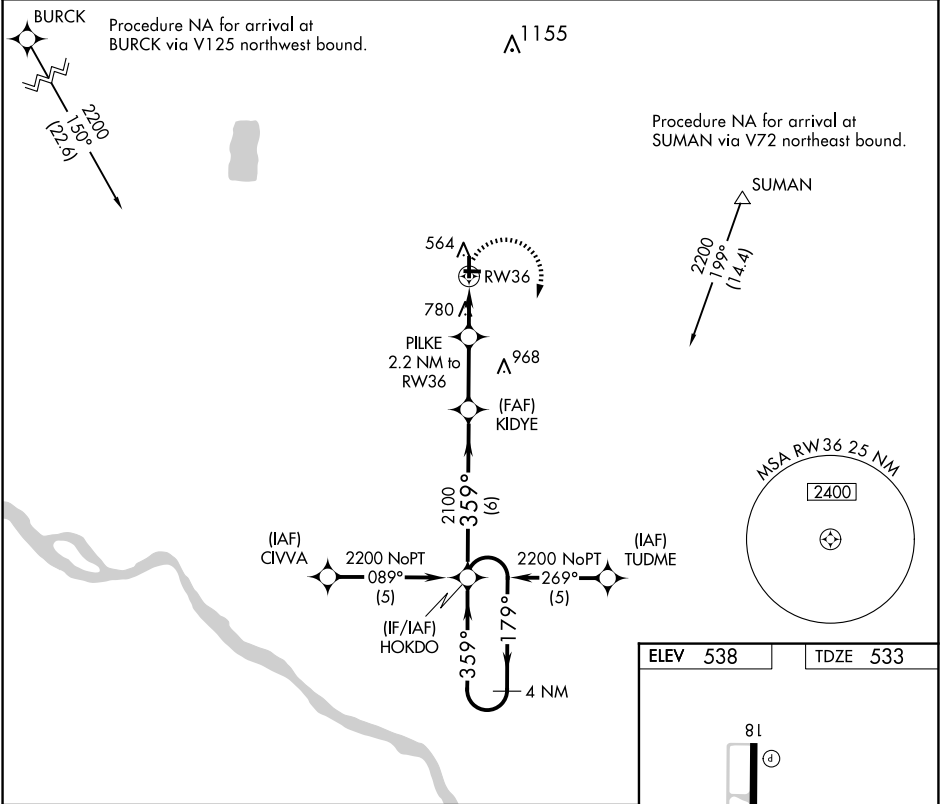
▼

▲

DME/DME RNP-0.3 NA. When local altimeter setting not received, use Scott AFB/Midamerica St Louis altimeter setting and increase all MDAs 80 feet and increase Circling Cat C/D visibility ¼ SM. Helicopter visibility reduction below ¾ SM NA. Circling NA to Rwy 9/27. VDP NA when using Scott AFB/Midamerica St Louis altimeter setting.

MISSED APPROACH:
Climbing right turn to 2200 direct HOKDO and hold.

AWOS-3PT 118.375	ST. LOUIS APP CON 125.2 281.5	UNICOM 123.075(CTAF) 0
---------------------	----------------------------------	---------------------------



4 NM Holding Pattern

VGSI and descent angles not coincident (VGSI Angle 3.50/TCH 24).

2200 HOKDO

Holding pattern diagram showing a 179° turn followed by a 359° turn. The pattern is defined by a 4 NM holding pattern with a 2100' altitude. The chart also shows the transition from 2100' to 1260' MSL, then to 1260' MSL, and finally to 1260' MSL. The chart includes a table with categories A, B, C, and D, and a table with categories A, B, C, and D.

CATEGORY	A	B	C	D
RNAV MDA	1080-1	547 (600-1)	1080-1½	1080-1¾
			547 (600-1½)	547 (600-1¾)
CIRCLING	1080-1	1140-1	1140-1¾	1320-2½
	542 (600-1)	602 (700-1)	602 (700-1¾)	782 (800-2½)

