

WAAS CH <b>72938</b> <b>W19A</b>	APP CRS <b>191°</b>	Rwy Idg TDZE <b>356</b> Apt Elev <b>358</b>
--	------------------------	---

RNAV (GPS) RWY 19

GIBSON COUNTY (TGC)

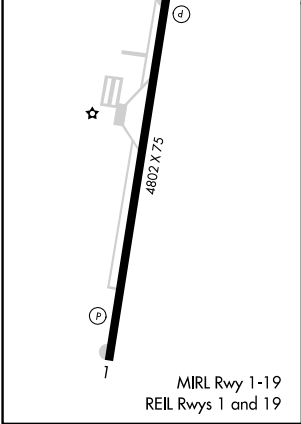
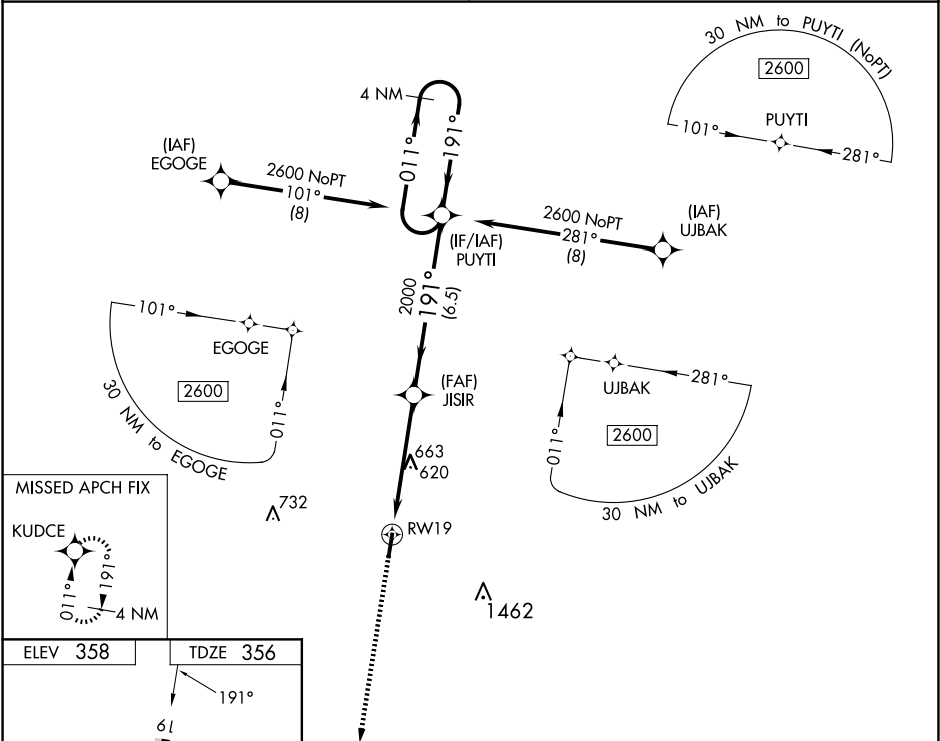
▼

NA

Night landing: Rwy 19 NA. DME/DME RNP-0.3 NA. Helicopter visibility reduction below 1 SM NA. Obtain local altimeter setting on CTAF; when not received use Jackson Rgnl altimeter setting and increase all MDA 60 feet, increase Circling Cat C visibility ¼ mile.

MISSED APPROACH: Climb to 2600 direct KUDCE and hold.

MEMPHIS CENTER <b>134.65 316.15</b>	UNICOM <b>122.8</b> (CTAF)
--	-------------------------------



ELEV 358		TDZE 356	
2600		KUDCE	
2600		VGSi and RNAV glidepath not coincident (VGSi Angle 3.00/TCH 26).	
2600		4 NM Holding Pattern	
2600		PUYTI	
2600		JISIR	
2600		RW19	
2600		2000	
2600		3.00° TCH 40	
2600		5 NM	
2600		6.5 NM	
CATEGORY	A	B	C
LP MDA	920-1	564 (600-1)	920-1½ 564 (600-1½)
LNAV MDA	940-1	584 (600-1)	940-1¾ 584 (600-1¾)
CIRCLING	980-1	622 (700-1)	980-1¾ 622 (700-1¾)
			1780-3 1422 (1500-3)