


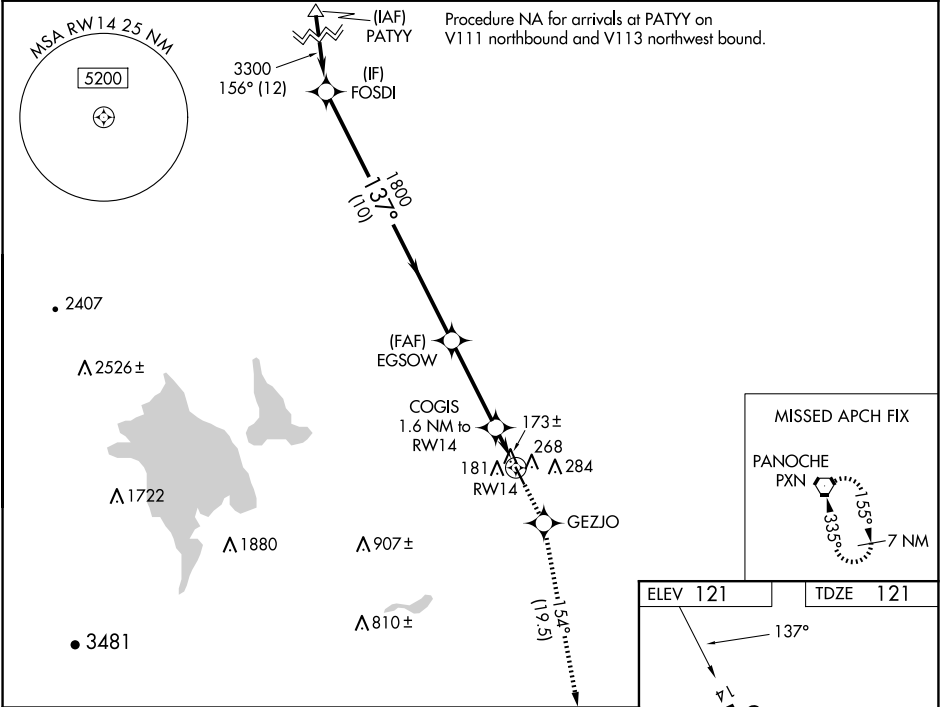
WAAS CH <b>53715</b> <b>W14A</b>	APP CRS <b>137°</b>	Rwy Idg TDZE <b>121</b> Apt Elev <b>121</b>	<b>3801</b>
--	------------------------	---	-------------

RNAV (GPS) RWY 14

LOS BANOS MUNI (LSN)

RNP APCH.		MISSED APPROACH: Climb to 6500 direct GEZJO and on track 154° to PXN VORTAC and hold, continue climb-in-hold to 6500.
	Rwy 14 helicopter visibility reduction below ¾ SM NA. Baro-VNAV and VDP NA when using Merced Yosemite Rgnl altimeter setting. For uncompensated Baro-VNAV systems, LNAV/VNAV NA below -15°C or above 54°C. When local altimeter setting not received, use Merced Yosemite Rgnl altimeter setting and increase all DA/MDA 60 feet, and all visibility ¼ SM.	

AWOS-3 <b>118.675</b>	NORCAL APP CON <b>120.95 269.45</b>	UNICOM <b>122.8</b> (CTAF) 
--------------------------	--	---



FOSDI		EGSOW	6500	GEZJO	tr 154°	PXN
3300		1800	COGIS 1.6 NM to RW14	*1.2 NM to RW14	RW14	
GP 3.00° TCH 30		*660				
10 NM		3.5 NM	0.4 NM	1.2 NM		
CATEGORY	A	B	C	D		
LPV DA	455-1¼		334 (400-1¼)			
LNAV/VNAV DA	519-1½		398 (400-1½)			
LNAV MDA	520-1	399 (400-1)	520-1⅛ 399 (400-1⅛)	520-1¼ 399 (400-1¼)		

