

APP CRS
052°

Rwy Idg
4699

TDZE
434

Apt Elev
434

RNAV (GPS) RWY 5

SARATOGA COUNTY (5B2)

RNP APCH.

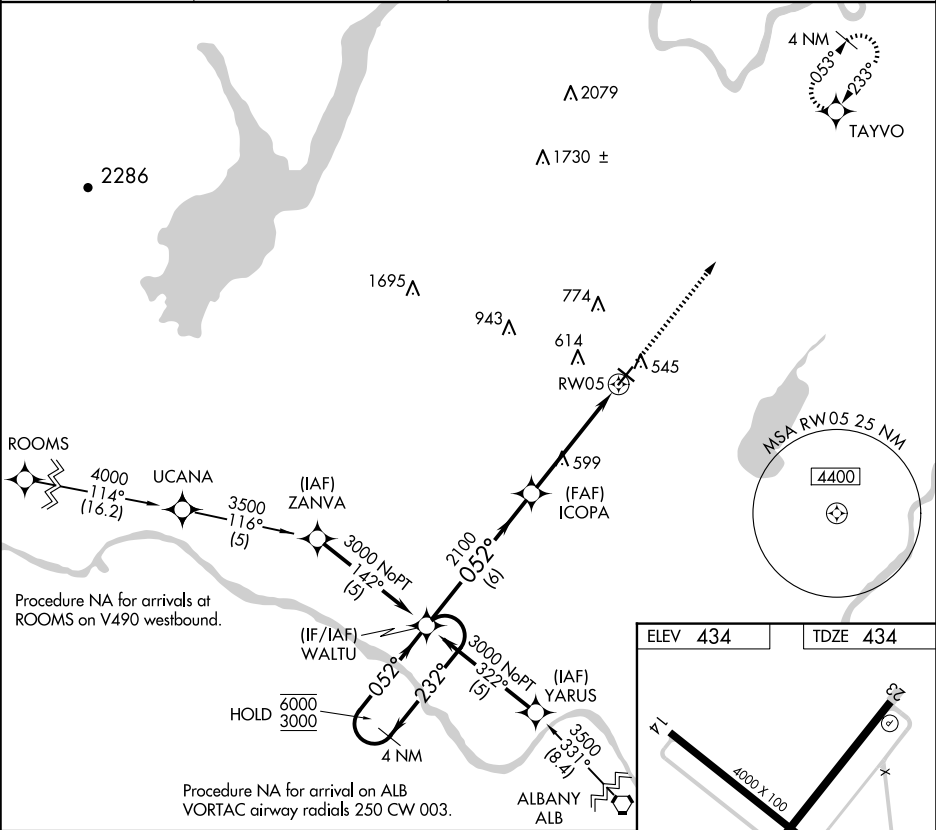
Procedure NA at night. Rwy 5 helicopter visibility reduction below 1 SM NA.

When local altimeter setting not received, use Albany altimeter setting and increase all MDAs 80 feet and LNAV Cat C/D visibilities 1/8 SM.

MISSED APPROACH: Climb to 3000

direct TAYVO and hold.

AWOS-3 132.025	ALBANY APP CON 118.05 263.075	CLNC DEL (GCO) 118.125	UNICOM 123.075 (CTAF) 0
--------------------------	---	----------------------------------	-----------------------------------



4 NM Holding Pattern WALUTU

6000

3000

← 232°

→ 052°

052°

2100

ICOPA

3.04°

TCH 46

6 NM

5 NM

3000

TAYVO

RW05

ELEV 434

TDZE 434

4000 X 100

4699 X 100

052°

484

CATEGORY	A	B	C	D
LNAV MDA	860-1	426 (500-1)	860-1 1/4	426 (500-1 1/4)

MIRL Rwy 5-23 0

MIRL Rwy 14-32

REIL Rwys 5 and 23 0