

WAAS CH <b>56611</b> <b>W23A</b>	APP CRS <b>233°</b>	Rwy Idg TDZE Apt Elev	<b>4699</b> <b>431</b> <b>434</b>
----------------------------------------	------------------------	-----------------------------	-----------------------------------------

RNAV (GPS) RWY 23

SARATOGA COUNTY (5B2)

RNP APCH

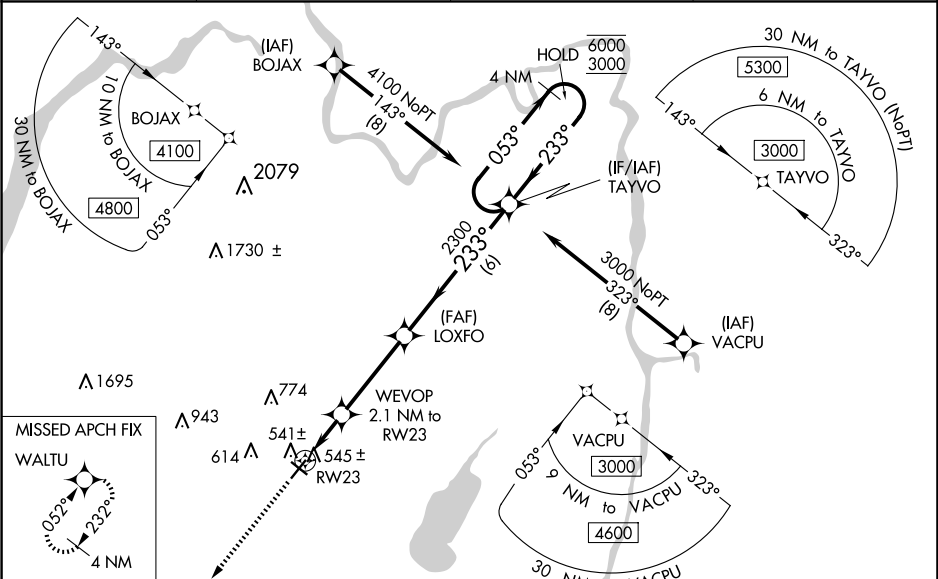
▼

▲ NA

Baro-VNAV and VDP NA when using Albany altimeter setting. Rwy 23 helicopter visibility reduction below ¾ SM NA. For uncompensated Baro-VNAV systems, LNAV/VNAV NA below -15°C or above 54°C. Circling NA at night. When local altimeter setting not received, use Albany altimeter setting and increase all DAs 63 feet and MDAs 80 feet. Increase LPV and LNAV/VNAV all Cats visibility ½ SM, LNAV Cats C/D visibility ¾ SM, and Circling Cat C visibility ¼ SM.

MISSED APPROACH: Climb to 3000 direct WALTU and hold.

AWOS-3 <b>132.025</b>	ALBANY APP CON <b>118.05 263.075</b>	CLNC DEL (GCO) <b>118.125</b>	UNICOM <b>123.075 (CTAF) 0</b>
--------------------------	-----------------------------------------	----------------------------------	-----------------------------------



ELEV 434 TDZE 431

MIRL Rwy 5-23  
MIRL Rwy 14-32  
REIL Rws 5 and 23

3000 WALTU		VGSI and RNAV glidepath not coincident (VGSI Angle 3.00/TCH 43).		TAYVO 4 NM Holding Pattern	
*LNAV only		WEVOP 2.1 NM to RW23		2300 233° 2300 233° 2300 233°	
RW23		*1 NM to RW23		*1140	
1 NM		1.1		3.6 NM	
CATEGORY		A		B	
LPV DA		698-7/8		267 (300-7/8)	
LNAV/VNAV DA		706-7/8		275 (300-7/8)	
LNAV MDA		800-1		369 (400-1)	
CIRCLING		980-1 546 (600-1)		1080-1 646 (700-1)	
		1140-2 706 (800-2)		1340-3 906 (1000-3)	