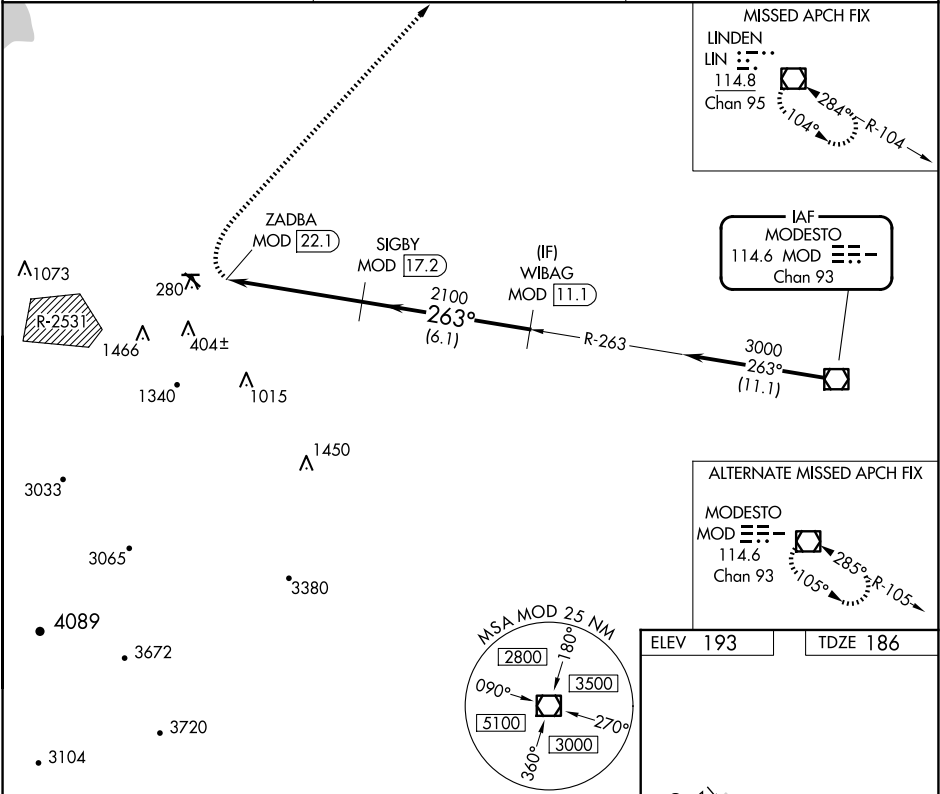


VOR/DME MOD	APP CRS	Rwy Idg	3438
114.6	263°	TDZE	186
Chan 93		Apt Elev	193

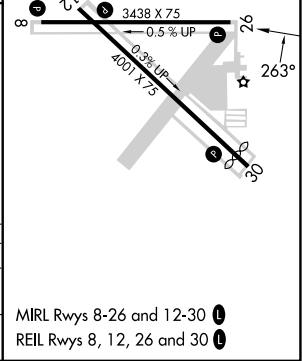
VOR RWY 26
TRACY MUNI (T'CY)

DME required. ⚠ Circling NA southwest of Rwy 12-30. Circling Rwy 30 NA at night. Rwy 26 helicopter visibility reduction below ¾ SM NA. When local altimeter setting not received, use Stockton altimeter setting: increase all MDAs 60 feet and visibility Cat C ½ SM.	MISSED APPROACH: Climbing right turn to 3000 direct LIN VOR/DME and hold.
---	---

AWOS-3 118.375	NORCAL APP CON 123.85 278.3	UNICOM 123.075 (CTAF) 0
-------------------	--------------------------------	----------------------------



3000 LIN	VGSI and descent angles not coincident (VGSI Angle 3.00/TCH 21).			
	SIGBY MOD 17.2			
	ZADBA MOD 22.1			
	WIBAG MOD 11.1			
	3000			
	2100			
	263°			
	3.00° TCH 40			
	1 NM 4.9 NM 6.1 NM			
CATEGORY	A	B	C	D
S-26	760-1¼	574 (600-1¼)	760-1½ 574 (600-1½)	NA
CIRCLING	760-1¼	567 (600-1¼)	760-1½ 567 (600-1½)	NA



SW-2, 10 JUL 2025 to 07 AUG 2025

SW-2, 10 JUL 2025 to 07 AUG 2025

MIRL Rwy 8-26 and 12-30 0
REIL Rwy 8, 12, 26 and 30 0