

WAAS CH <b>69201</b> <b>W30A</b>	APP CRS <b>297°</b>	Rwy Idg TDZE <b>193</b> Apt Elev <b>193</b>
--	------------------------	---

RNAV (GPS) RWY 30

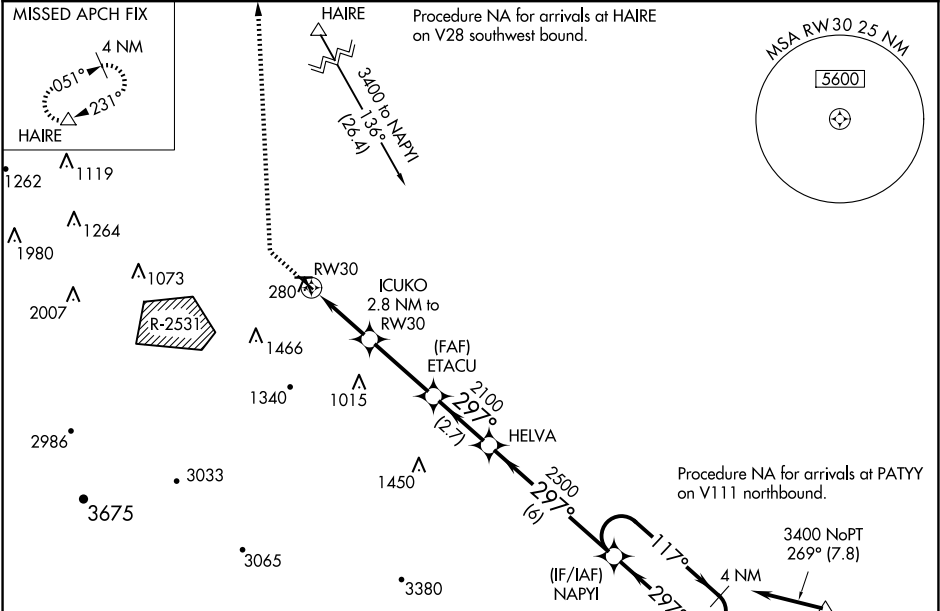
TRACY MUNI (TCY)

RNP APCH

Baro-VNAV NA when using Stockton altimeter setting. For uncompensated Baro-VNAV systems, LNAV/VNAV NA below -15°C or above 54°C. Circling NA southwest of Rwy 12-30. Straight-In Rwy 30 NA at night, Circling Rwy 30 NA at night. Rwy 30 helicopter visibility reduction below 1 SM NA. When local altimeter setting not received, use Stockton altimeter setting; increase all DAs to 507 feet; increase all MDAs 60 feet and visibility LNAV Cat C ½ SM.

MISSED APPROACH: Climb to 700 then climbing right turn to 3200 direct HAIRE and hold, continue climb-in-hold to 3200.

AWOS-3 <b>118.375</b>	NORCAL APP CON <b>123.85 278.3</b>	UNICOM <b>123.075 (CTAF) 0</b>
--------------------------	---------------------------------------	-----------------------------------



ELEV 193	TDZE 193
----------	----------

700 3200 HAIRE

VGSI and RVAV glidepath not coincident (VGSI Angle 3.00°/TCH 35).

4 NM Holding Pattern

NAPIY

117° 3400

297° 2500

ETACU 2100

HELVA

ICUKO 2.8 NM to RW30

\*LNAV only

RW30

\*1120

2100

GP 3.00° TCH 40

CATEGORY	A	B	C	D
LPV DA	447-1	254 (300-1)		NA
LNAV/ VNAV DA	443-1	250 (300-1)		NA
LNAV MDA	540-1	347 (400-1)		NA
CIRCLING	580-1 387 (400-1)	660-1 467 (500-1)	660-1½ 467 (500-1½)	NA

SW-2, 10 JUL 2025 to 07 AUG 2025

SW-2, 10 JUL 2025 to 07 AUG 2025