

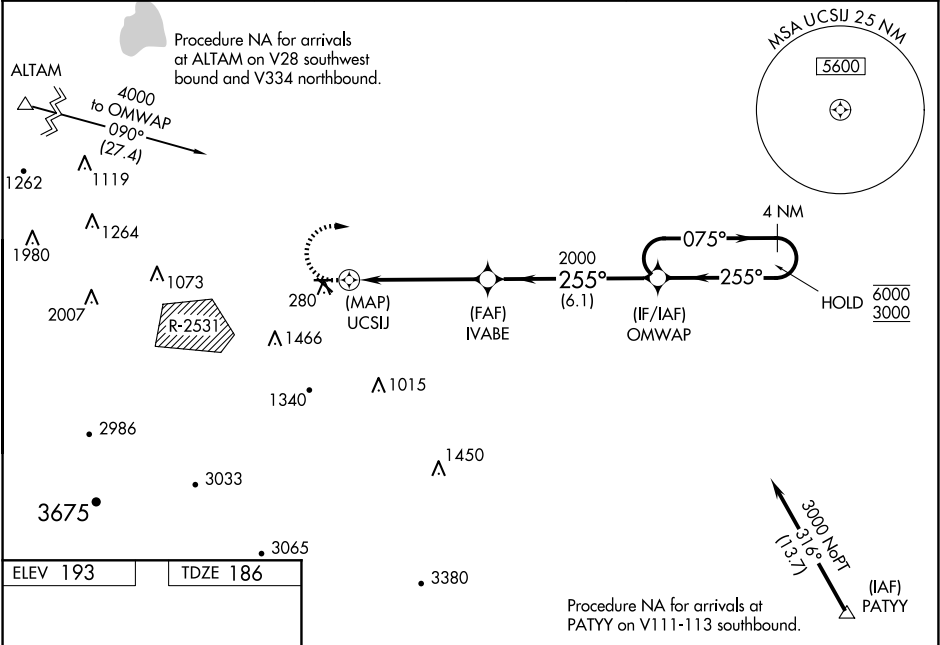
WAAS CH 49040 W26A	APP CRS 255°	Rwy Idg TDZE 186 Apt Elev 193
--	------------------------	---

RNAV (GPS) RWY 26

TRACY MUNI (TCY)

RNP APCH. Baro-VNAV NA when using Stockton altimeter setting. For uncompensated Baro-VNAV systems, LNAV/VNAV NA below -15°C or above 54°C. Circling NA southwest of Rwy 12-30. Circling Rwy 30 NA at night. Rwy 26 helicopter visibility reduction below ¾ SM NA. When local altimeter setting not received, use Stockton altimeter setting: increase LPV DA to 496 feet, increase LNAV/VNAV DA to 553 feet; increase all MDAs 60 feet and visibility LNAV Cat C ½ SM.	MISSED APPROACH: (Do not exceed 210K until OMWAP) Climb to 640 then climbing right turn to 3000 direct OMWAP and hold.
---	--

AWOS-3 118.375	NORCAL APP CON 123.85 278.3	UNICOM 123.075 (CTAF) 0
--------------------------	---------------------------------------	-----------------------------------



640		3000	OMWAP	VGSI and RNAV glidepath not coincident (VGSI Angle 3.00/TCH 21).		4 NM	Holding Pattern
↑		↶	✧	OMWAP		4 NM	Holding Pattern
255°		3438 X 75	0.5% UP	255°	075°	6000	3000
0.3% UP		4001 X 75	0.3% UP	255°	075°	6000	3000
255°		IVABE	2000	255°	075°	6000	3000
UCSIJ		2000	255°	075°	6000	3000	GP 3.00° TCH 40
0.7		5 NM	6.1 NM				
CATEGORY	A	B	C	D			
LPV DA	436-7½	250 (300-7½)		NA			
LNAV/VNAV DA	493-11½	307 (300-11½)		NA			
LNAV MDA	540-1	354 (400-1)		NA			
CIRCLING	580-1 387 (400-1)	660-1 467 (500-1)	660-1½ 467 (500-1½)	NA			