

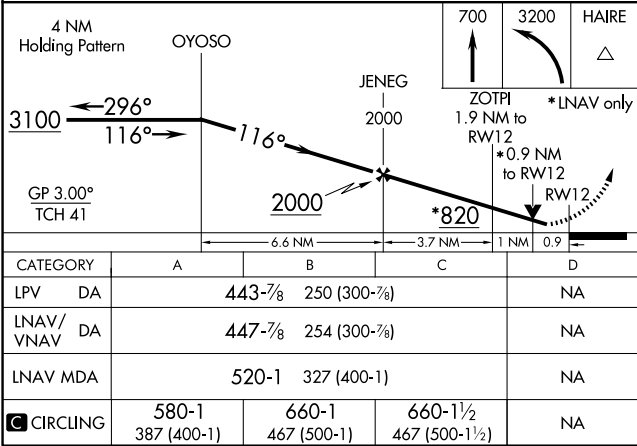
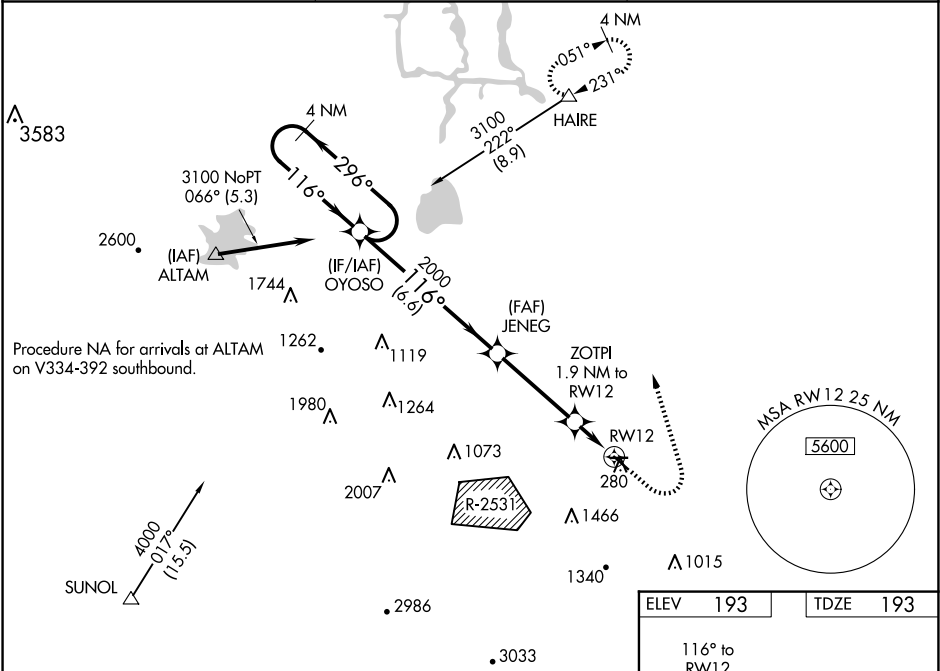
WAAS CH 49200 W12A	APP CRS 116°	Rwy Idg TDZE Apt Elev	4001 193 193
--	------------------------	-----------------------------	---

RNAV (GPS) RWY 12

TRACY MUNI (TCY)

RNP APCH	For uncompensated Baro-VNAV systems, LNAV/VNAV NA below -15°C or above 54°C. Circling NA southwest of Rwy 12-30. Baro-VNAV and VDP NA when using Stockton altimeter setting. Circling Rwy 30 NA at night. Rwy 12 helicopter visibility reduction below ¾ SM NA. When local altimeter setting not received, use Stockton altimeter setting: increase all DAs to 507 feet; increase all MDAs 60 feet and visibilities LNAV Cat C ¼ SM.	MISSED APPROACH: Climb to 700 then climbing left turn to 3200 direct HAIRE and hold.
----------	--	--

AWOS-3 118.375	NORCAL APP CON 123.85 278.3	UNICOM 123.075 (CTAF) 0
--------------------------	---------------------------------------	-----------------------------------



ELEV	193	TDZE	193
MIRL Rwy 8-26 and 12-30 0			
REIL Rwy 8, 12, 26 and 30 0			

SW-2, 10 JUL 2025 to 07 AUG 2025

SW-2, 10 JUL 2025 to 07 AUG 2025