

WAAS  
CH **56534**  
**W08A**

APP CRS  
**082°**

Rwy Ldg  
TDZE  
Apt Elev  
**7972**  
**526**  
**526**

**RNAV (GPS) RWY 8L**  
BROWN FLD MUNI (SDM)

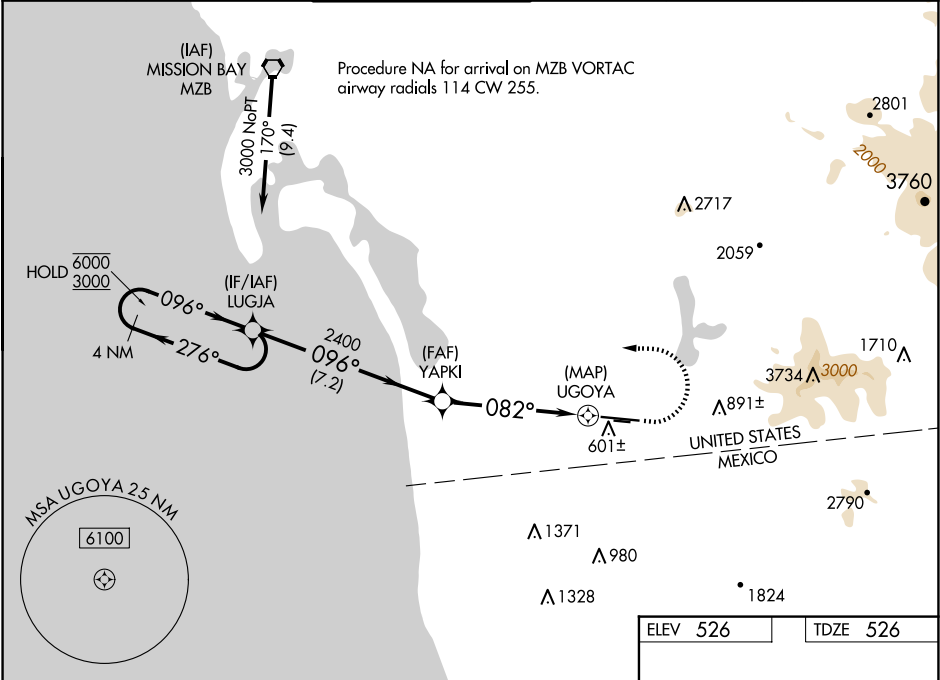
RNP APCH - GPS.

Circle

NA south of Rwy 8R-26L. For uncompensated Baro-VNAV systems, LNAV/VNAV NA below 1°C or above 54°C.

MISSED APPROACH: (Do not exceed 190K until LUGJA) Climb to 980 then climbing left turn to 3000 direct LUGJA and hold.

ATIS <b>132.35</b>	SOCAL APP CON <b>124.35 279.625</b>	BROWN TOWER ★ <b>128.25 (CTAF) 0 225.4</b>	GND CON <b>124.4</b>	CLNC DEL <b>124.4</b>	UNICOM <b>122.95</b>
-----------------------	----------------------------------------	-----------------------------------------------	-------------------------	--------------------------	-------------------------



4 NM Holding Pattern

LUGJA

6000  
3000

276°

096°

GP 3.00°  
TCH 52

YAPKI

2400

096°

2400

082°

0.9 NM to RW08L

UGOYA

980

3000

LUGJA

7.2 NM

4.8 NM

0.4

0.5

CATEGORY	A	B	C	D
LPV DA	726-1 200 (200-1)			
LNAV/VNAV DA	776-1 250 (300-1)			
LNAV MDA	860-1 334 (400-1)			
CIRCLING	1020-1 494 (500-1)		1340-2½ 814 (900-2½)	2260-3 1734 (1800-3)

ELEV 526

TDZE 526

REIL Rwy 26R

REIL Rwy 8L

MIRL Rwy 8R-26L

HIRL Rwy 8L-26R

7972 X 150

±0.4% UP

3185 X 75

TWR 604