

SOCIAL APP CON
 124.35 279.625
 KNZY ATIS ★
 317.8
 SDM ATIS
 132.35

ARRIVAL ROUTE DESCRIPTION

IMPERIAL TRANSITION (IPL.CHASR2)
MOMAR TRANSITION (MOMAR.CHASR2)
PARKER TRANSITION (PKE.CHASR2)
TRUE TRANSITION (TRUE.CHASR2)

INZY/SDM: From TOPGN on track 249° to across CHASR at 6400, then on track 250°. Expect RADAR vectors to final approach course.

NOTE: RADAR required.

NOTE: RNAV 1.

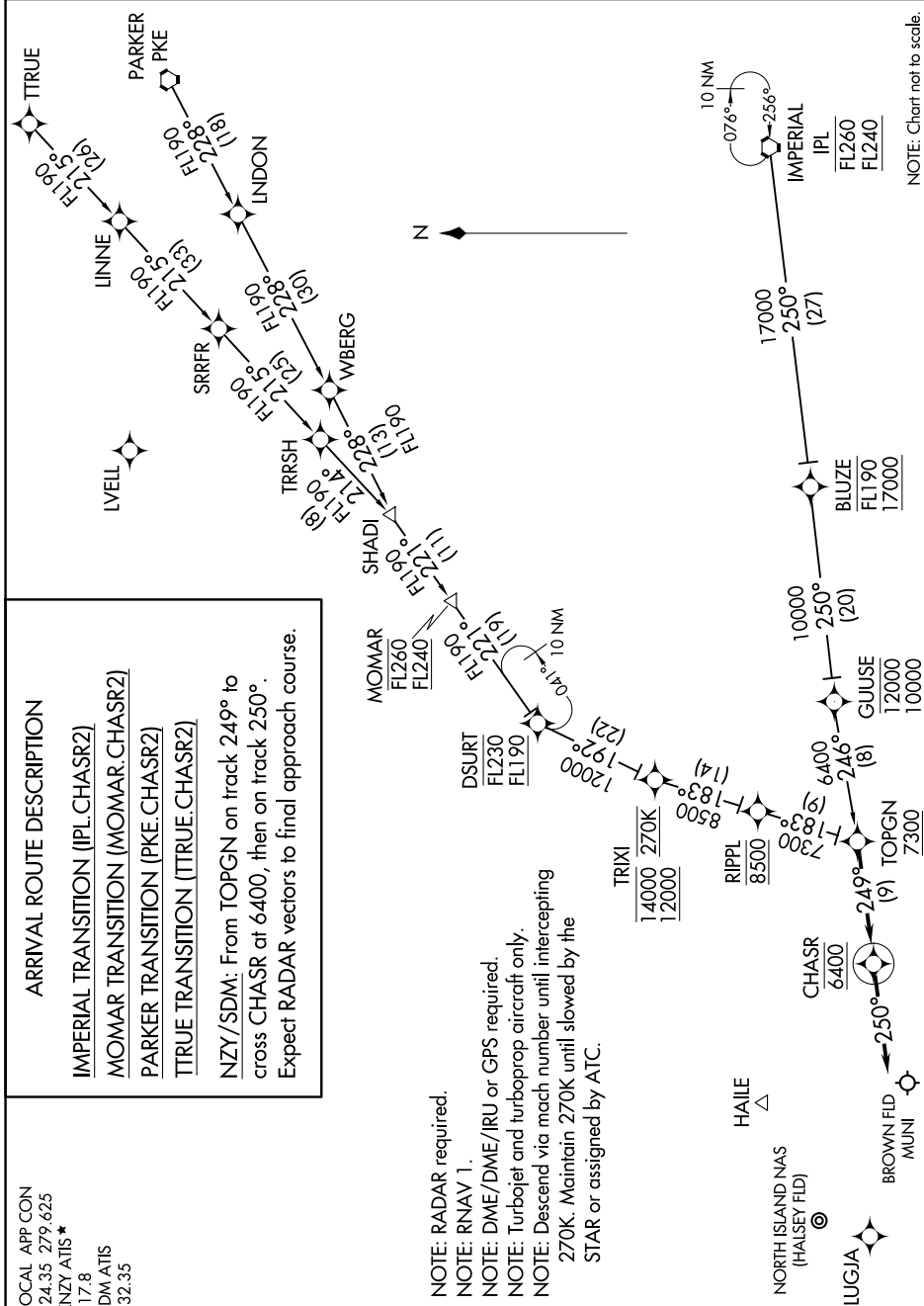
NOTE: DME/DME/IRU or GPS required.

NOTE: Turbojet and turboprop aircraft only.

NOTE: Descend via mach number until intercepting

270K. Maintain 270K until slowed by the

STAR or assigned by ATC.



NOTE: Chart not to scale.