

WAAS CH <b>90237</b> <b>W03A</b>	APP CRS <b>028°</b>	Rwy Idg TDZE Apt Elev	<b>3701</b> <b>2595</b> <b>2595</b>
--	------------------------	-----------------------------	---

RNAV (GPS) RWY 3

MILLER FLD (VTN)

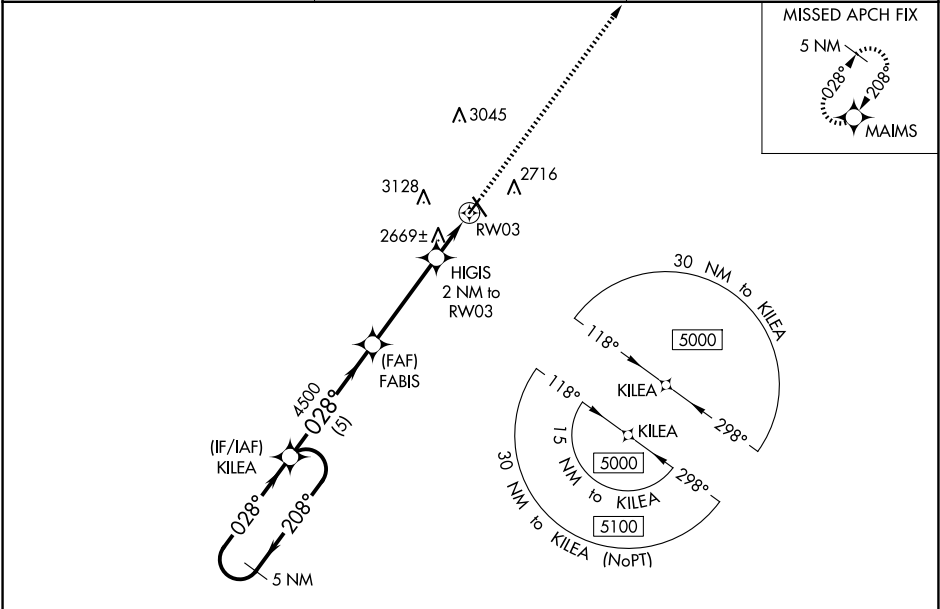
⚠

⚠

Baro-VNAV NA when using Ainsworth Rgnl altimeter setting. For uncompensated Baro-VNAV systems, LNAV/VNAV NA below -25°C (-13°F) or above 54°C (130°F). DME/DME RNP-0.3 NA. VDP NA with Ainsworth Rgnl altimeter setting. When local altimeter setting not received, use Ainsworth Rgnl altimeter setting and increase all DA 70 feet and all MDA 80 feet, increase LNAV/VNAV Cat A/B visibility ½ mile.

MISSED APPROACH:  
Climb to 5000 direct  
MAIMS and hold.

ASOS <b>118.075</b>	DENVER CENTER <b>127.95 338.2</b>	UNICOM <b>122.8 (CTAF) 0</b>
------------------------	--------------------------------------	---------------------------------



ELEV 2595

TDZE 2595

5000

MAIMS

\*LNAV only.

5 NM Holding Pattern

KILEA

5000

←208°

→028°

028°

4500

FABIS

HIGIS  
2 NM to  
RW03

\*0.8 NM to  
RW03

RW03

GP 3.00°  
TCH 39

5 NM

3.9 NM

1.2 NM

0.8 NM

\*3260

CATEGORY	A	B	C	D
LPV DA	2845-1	250 (300-1)	NA	
LNAV/VNAV DA	2845-1	250 (300-1)	NA	
LNAV MDA	2920-1	325 (400-1)	NA	
CIRCLING	3080-1 485 (500-1)	3560-1½ 965 (1000-1½)	NA	

REIL Rwy 32 0

MIRL Rwy 3-21 and 14-32 0

⬢ 32

⬢ 31

⬢ 30

⬢ 29

⬢ 28

⬢ 27

⬢ 26

⬢ 25

⬢ 24

⬢ 23

⬢ 22

⬢ 21

⬢ 20

⬢ 19

⬢ 18

⬢ 17

⬢ 16

⬢ 15

⬢ 14

⬢ 13

⬢ 12

⬢ 11

⬢ 10

⬢ 9

⬢ 8

⬢ 7

⬢ 6

⬢ 5

⬢ 4

⬢ 3

⬢ 2

⬢ 1