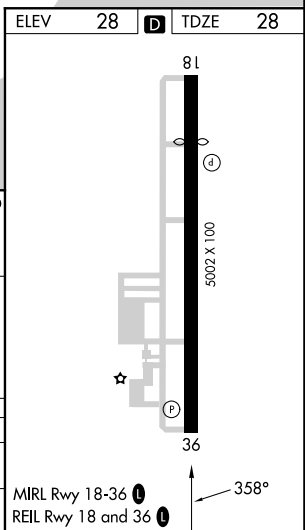
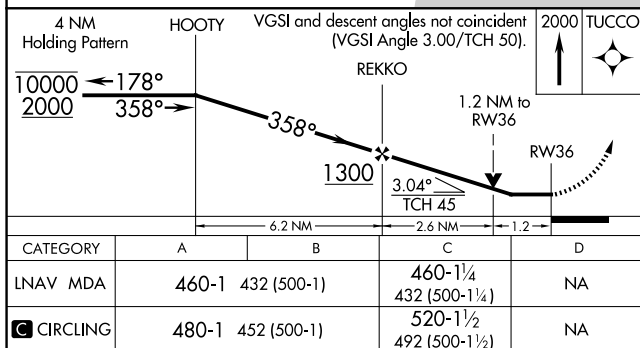
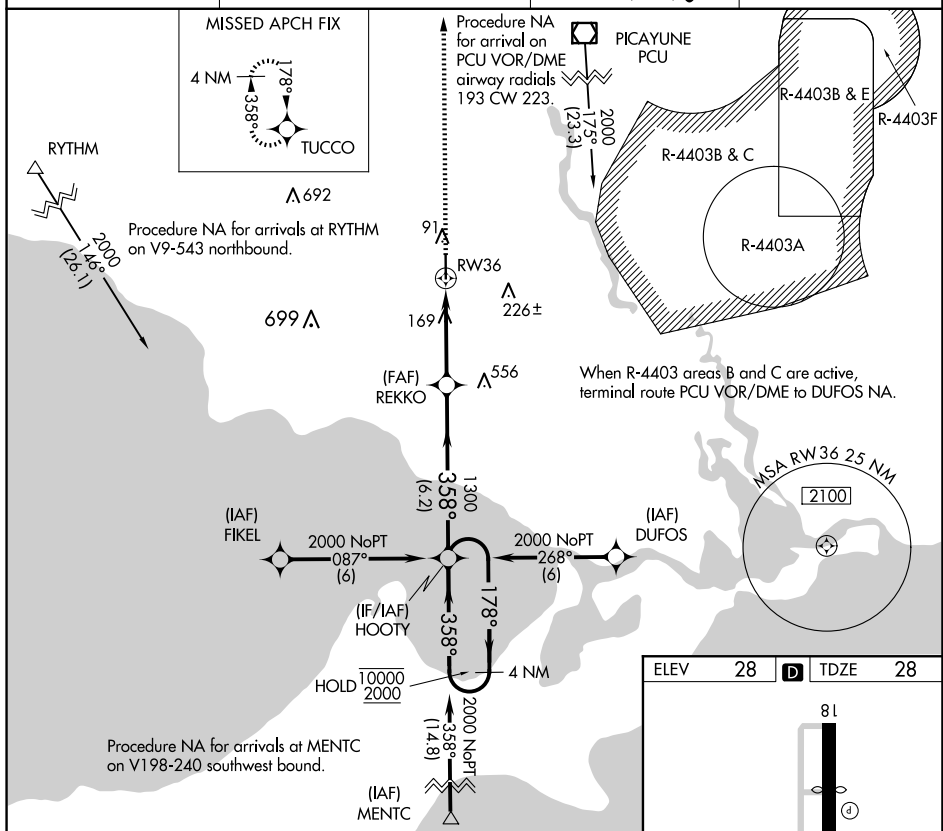


RNAV (GPS) RWY 36  
SLIDELL (ASD)

**T**  
**A** Rwy 36 helicopter visibility reduction below  $\frac{3}{4}$  SM NA.

**MISSED APPROACH:** Climb to 2000 direct TUCCO and hold.

GCO  
135.075



SC-4, 10 JUL 2025 to 07 AUG 2025

SC-4, 10 JUL 2025 to 07 AUG 2025