

WAAS CH <b>49017</b> <b>W03A</b>	APP CRS <b>029°</b>	Rwy Idg <b>4400</b> TDZE <b>410</b> Apt Elev <b>416</b>
--	------------------------	---

## RNAV (GPS) RWY 3

FARMVILLE RGNL (FVX)

RNP APCH-GPS.

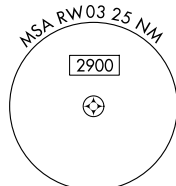
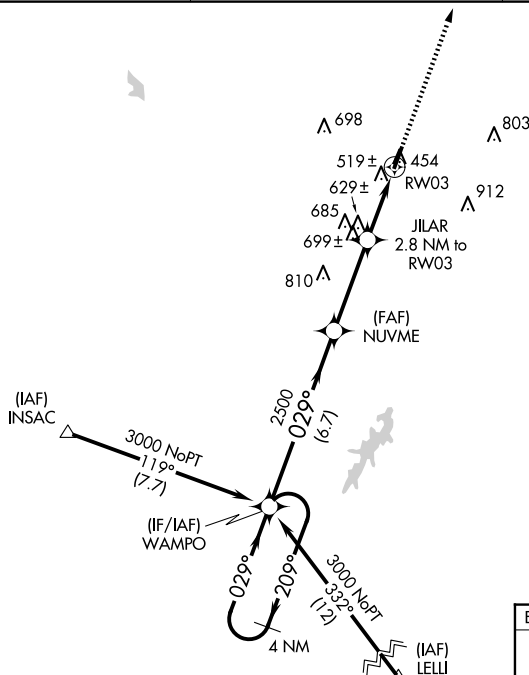
**T** Baro-VNAV NA when using Lynchburg Rgnl/Preston Glenn Fld altimeter setting. For uncompensated Baro-VNAV systems, LNAV/VNAV NA below -15°C or above 54°C. Straight-in/Circling Rwy 3 procedure NA at night. When local altimeter setting not received, use Lynchburg Rgnl/Preston Glenn Fld altimeter setting and increase LPV DA to 878 feet and all visibilities  $\frac{3}{8}$  SM. Increase LNAV/VNAV DA to 970 feet and all visibilities  $\frac{1}{2}$  SM. Increase all MDA 160 feet and LNAV visibility Cat C  $\frac{1}{4}$  SM, and Circling visibility Cat C  $\frac{1}{2}$  SM. Rwy 3 helicopter visibility reduction below 1 SM NA.

**MISSED APPROACH:**  
Climb to 3000 direct  
BODRY and hold.

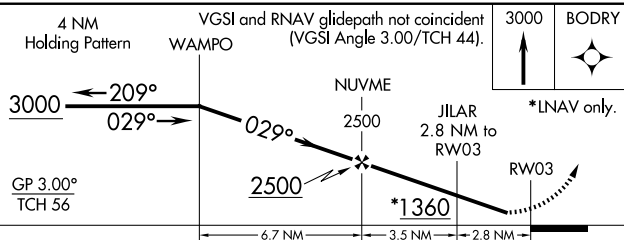
AWOS-3 132.725	ROANOKE APP CON 135.0 254.325	UNICOM 122.8 (CTAF) <b>1</b>
-------------------	----------------------------------	---------------------------------

• 1151

MISSED APCH FIX



ELEV 416		TDZE 410
----------	--	----------



CATEGORY	A	B	C	D
LPV DA	720-1	310 (400-1)		NA
RNAV/DA	812-1½	402 (400-1½)		NA
RNAV MDA	880-1	470 (500-1)	880-1½ 470 (500-1½)	NA
CIRCLING	900-1	484 (500-1)	1000-1½ 584 (600-1½)	NA

