

WAAS CH 70517 W21A	APP CRS 209°	Rwy Idg 4400 TDZE 416 Apt Elev 416
--	------------------------	---

RNAV (GPS) RWY 21

FARMVILLE RGNL (FVX)

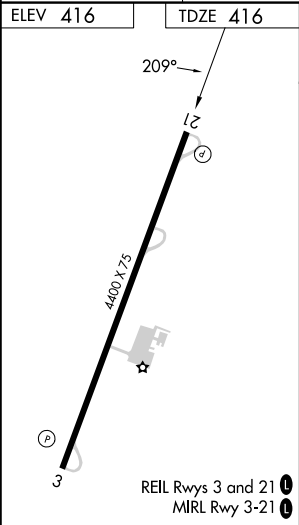
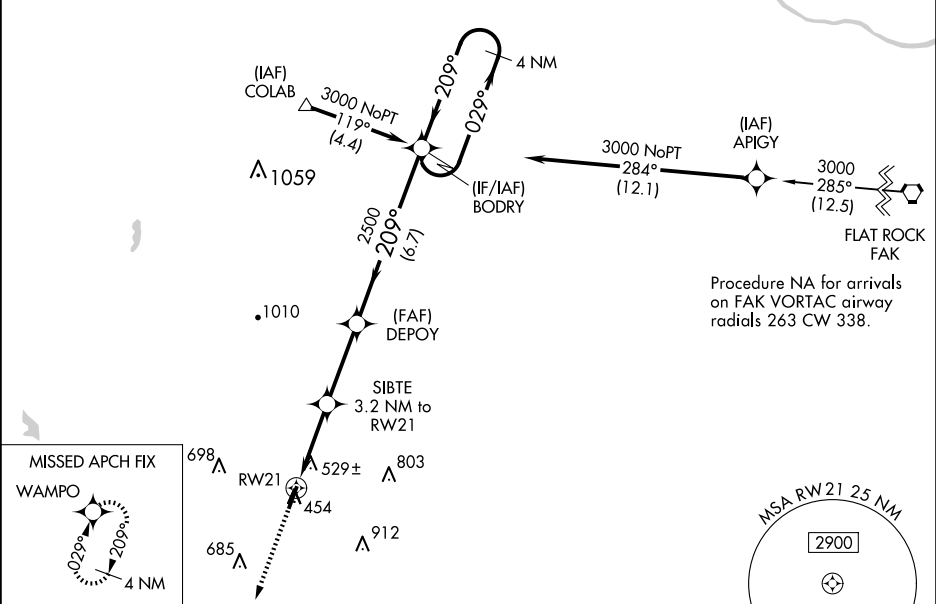
RNP APCH-GPS


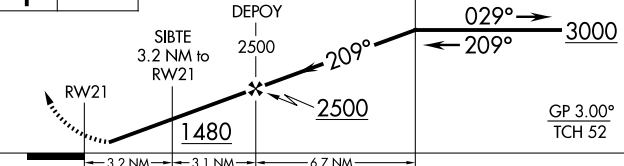
▼

Baro-VNAV NA when using Lynchburg Rgnl/Preston Glenn Fld altimeter setting. For uncompensated Baro-VNAV systems, LNAV/VNAV NA below -15°C or above 54°C. When local altimeter setting not received, use Lynchburg Rgnl/Preston Glenn Fld altimeter setting and increase LPV DA to 854 feet and all visibilities ¼ SM, increase LNAV/VNAV DA to 1024 feet and all visibilities ⅓ SM, increase all MDAs 160 feet and LNAV visibility Cat C ⅓ SM. Circling Rwy 3 NA at night. Rwy 21 helicopter visibility reduction below 1 SM NA.

MISSED APPROACH:
Climb to 3000 direct WAMPO and hold.

AWOS-3 132.725	ROANOKE APP CON 135.0 254.325	UNICOM 122.8 (CTAF)
--------------------------	---	-------------------------------



3000 ↑	WAMPO 	VGSI and RNAV glidepath not coincident (VGSI Angle 3.00/TCH 45).		4 NM Holding Pattern		
						
CATEGORY	A		B		C	D
LPV DA	696-1 280 (300-1)					NA
LNAV/ VNAV DA	866-1⅓ 450 (500-1⅓)					NA
LNAV MDA	860-1	444 (500-1)	860-1⅓ 444 (500-1⅓)		NA	
CIRCLING	900-1	484 (500-1)	1000-1½ 584 (600-1½)		NA	