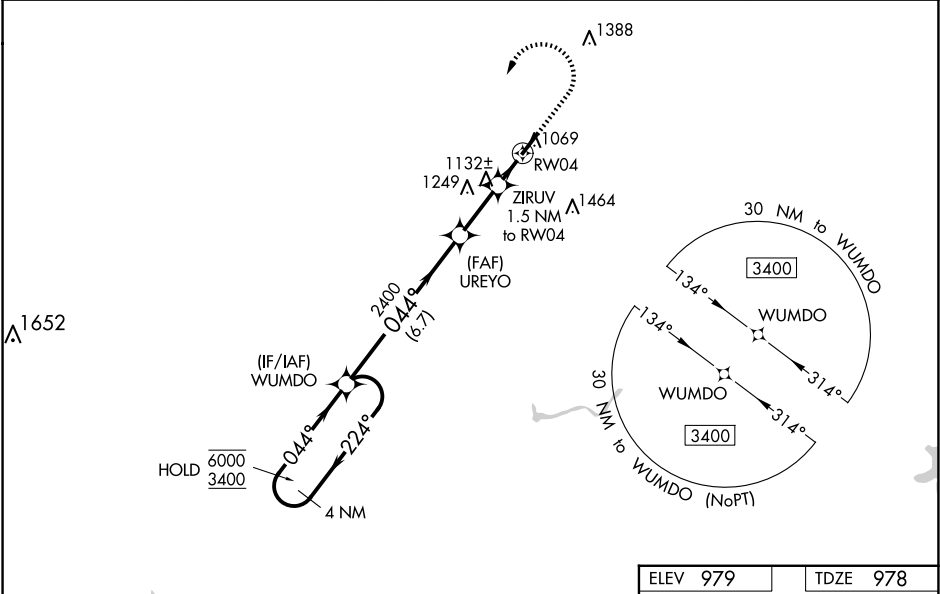


WAAS CH 86543 W04A	APP CRS 044°	Rwy Idg TDZE Apt Elev	5001 978 979
--	------------------------	-----------------------------	---

RNAV (GPS) RWY 4

RICHARD DOWNING (I40)

RNP APCH. <div><div>▼</div><div>▲NA</div></div> <div>Rwy 4 helicopter visibility reduction below ¾ SM NA. Baro-VNAV NA when using Zanesville altimeter setting. For uncompensated Baro-VNAV systems, LNAV/VNAV NA below -16°C or above 48°C. When local altimeter setting not received, use Zanesville altimeter setting and increase LPV DA to 1344 feet, increase LNAV/VNAV DA to 1310 feet, increase all MDA 80 feet and LPV and LNAV/VNAV visibility ½ SM, LNAV Cat C/D visibility ¼ SM, and Circling Cat C/D visibility ½ SM.</div>		MISSED APPROACH: Climb to 1480 then climbing left turn to 3400 direct WUMDO and hold.		
AWOS-3 118.875	INDIANAPOLIS CENTER 124.45 323.275	GCO 121.725	UNICOM 123.0 (CTAF)	122.9 0



4 NM Holding Pattern		VGSI and RNAV glidepath not coincident (VGSI Angle 3.50/TCH 26).		1480	3400	WUMDO
WUMDO		UREYO		* LNAV only.		
6000 ← 224°		2400		* 1560		
3400 → 044°		2400		RWY 4		
GP 3.50° TCH 45		2400		1.5 NM to RWY 4		
		6.7 NM		2.3 NM		
				1.5 NM		
CATEGORY	A	B	C	D		
LPV DA	1282-7/8		304 (400-7/8)			
LNAV/VNAV DA	1248-7/8		270 (300-7/8)			
LNAV MDA	1400-1	422 (500-1)	1400-1¼	422 (500-1¼)		
CIRCLING	1440-1 461 (500-1)	1500-1 521 (600-1)	1780-2¼ 801 (900-2¼)	1780-2½ 801 (900-2½)		

