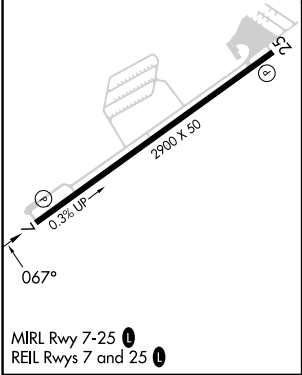
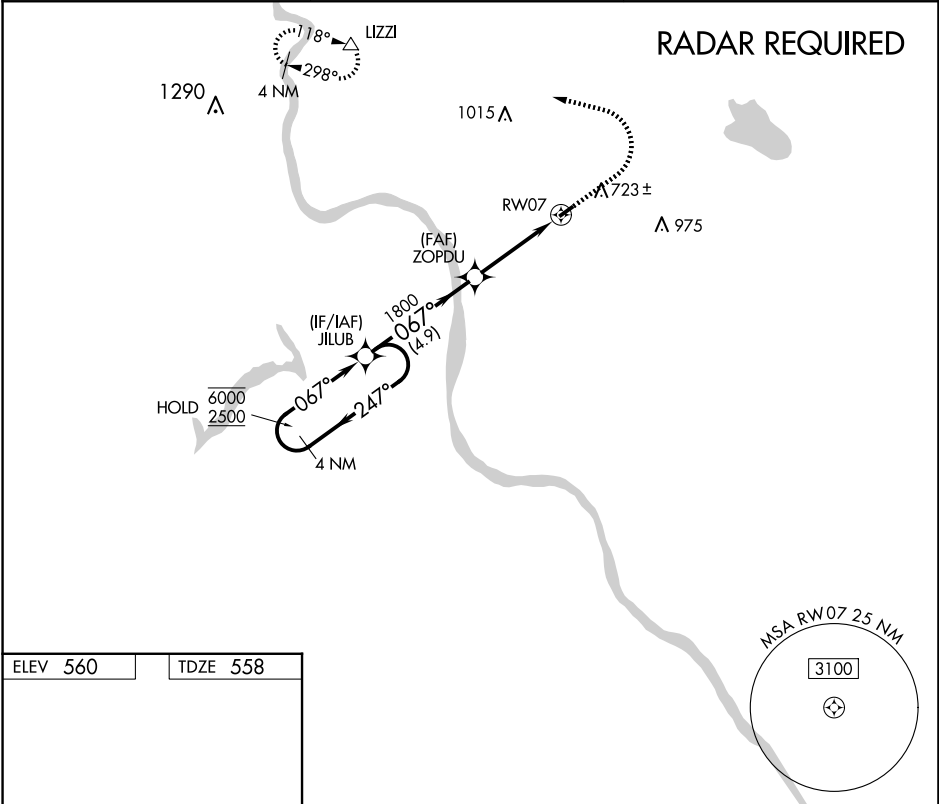


APP CRS	Rwy Idg	2900
067°	TDZE	558
	Apt Elev	560

RNAV (GPS) RWY 7
SKY MANOR (N4Ø)

RNP APCH	Procedure NA at night. When local altimeter setting not received, use Lehigh Valley Intl altimeter setting. Rwy 7 helicopter visibility reduction below 1 SM NA.	MISSED APPROACH: Climb to 1100 then climbing left turn to 3000 direct IZZI and hold.
AWOS-3 121.725	ALLENTOWN APP CON 119.65 124.45 351.8	UNICOM 122.975 (CTAF) Ø



Visual Segment - Obstacles.			
4 NM Holding Pattern			
JILUB			
6000 ← 247°			
2500 → 067°			
ZOPDU			
1800			
RW07			
4.9 NM 3.8 NM			
CATEGORY	A	B	C D
LNAV MDA	1080-1 522 (600-1)	NA	
CIRCLING	1140-1 580 (600-1)	NA	

NE-2, 10 JUL 2025 to 07 AUG 2025

NE-2, 10 JUL 2025 to 07 AUG 2025