

WAAS
CH **97603**
W14A

APP CRS
135°

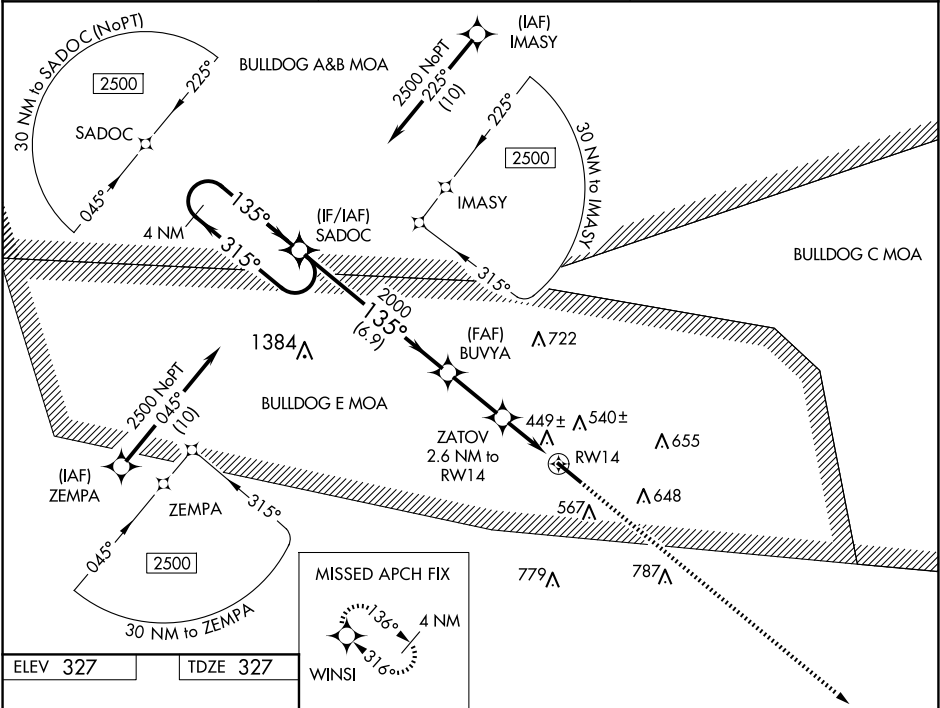
Rwy Idg
TDZE **327**
Apt Elev **327**

RNAV (GPS) RWY 14
EAST GEORGIA RGNL (SBO)

▼ Baro-VNAV and VDP NA when using Vidalia altimeter setting. For uncompensated Baro-VNAV systems, LNAV/VNAV NA below -15°C (5°F) or above 54°C (130°F). When local altimeter setting not received, use Vidalia altimeter setting and increase LPV DA to 708 feet, LNAV/VNAV DA to 698 feet, and all MDA 80 feet; increase LPV and LNAV/VNAV all Cats visibility ¼ SM, LNAV Cats C/D visibility ⅓ SM, and Circling Cats C/D visibility ¼ SM. Rwy 14 helicopter visibility reduction below ¾ SM NA. DME /DME RNP-0.3 NA.

MISSED APPROACH:
Climb to 2500 direct
WINSI and hold.

AWOS-3 133.375	ATLANTA CENTER 127.95 343.75	UNICOM 122.975 (CTAF) 0
--------------------------	--	-----------------------------------



135°

6021 X 100

32°

4 NM Holding Pattern

2500

GP 3.00° TCH 42

SADOC

315°

135°

2000

135°

BUVYA 2000

ZATOV 2.6 NM to RW14

*1180

*1 NM to RW14

RW14

2500

WINSI

*LNAV only

	6.9 NM		2.5 NM		1.6 NM	1 NM	
CATEGORY	A		B	C		D	
LPV DA			643-1	316 (400-1)			
LNAV/VNAV DA			633-1	306 (400-1)			
LNAV MDA			700-1	373 (400-1)			
CIRCLING	900-1 573 (600-1)	920-1 593 (600-1)	1000-2 673 (700-2)	1000-2¼ 673 (700-2¼)			

HIRL Rwy 14-32