

LOC/DME I-SBO 109.35 Chan 30 (Y)	APP CRS 136°	Rwy Idg 6021 TDZE 327 Apt Elev 327
--	------------------------	---

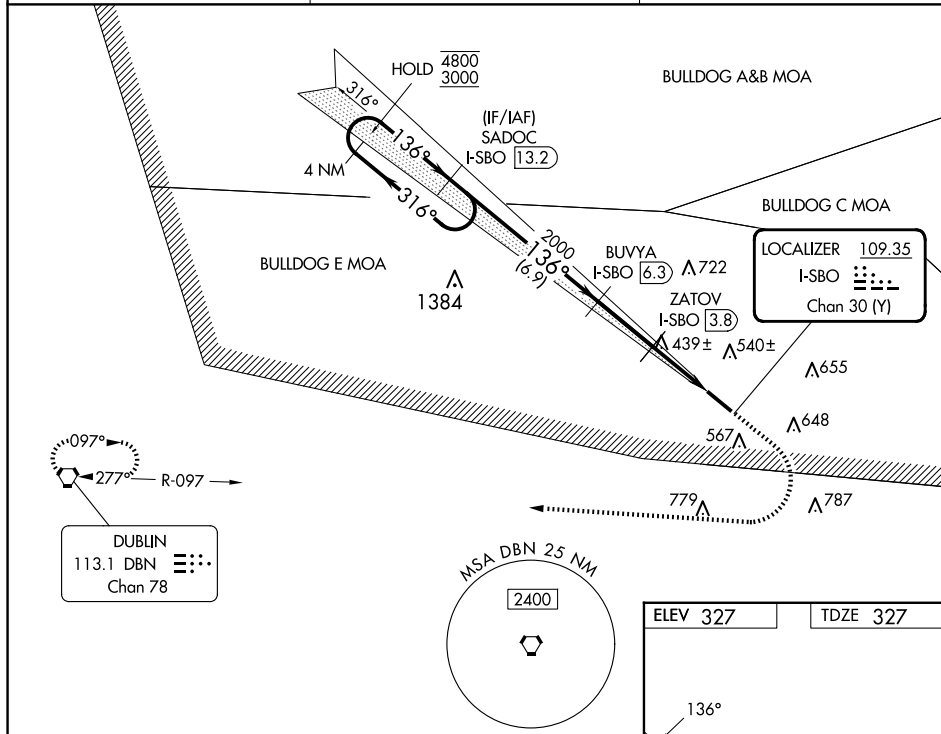
ILS or LOC RWY 14
EAST GEORGIA RGNL (SBO)

DME required. RADAR required for procedure entry.

- T** Rwy 14 helicopter visibility reduction below $\frac{3}{4}$ SM NA. VDP NA when using Vidalia altimeter setting. When local altimeter setting not received, use Vidalia altimeter setting: increase S-ILS 14 DA to 705 feet; increase all MDAs 80 feet and visibility S-LOC 14 Cats C and D $\frac{3}{4}$ SM, and Circling Cats C and D $\frac{1}{4}$ SM.

MISSED APPROACH: Climb to 2000 then climbing right turn to 3000 direct DBN VORTAC and hold.

AWOS-3 133.375	ATLANTA CENTER 127.95 343.75	UNICOM 122.975 (CTAF) 0
--------------------------	--	-----------------------------------



4NM Holding Pattern		SADOC I-SBO 13.2		BUYVA I-SBO 6.3		ZATOV I-SBO 3.8		I-SBO 2.2		I-SBO 1.2	
4800 ← 316° 3000		136° →		2000		1180		1.6 NM		1 NM	
GS 3.00° TCH 42		6.9 NM		2.5 NM		1.6 NM		1 NM		1 NM	
CATEGORY	A		B		C		D				
S-ILS 14			640-1		313 (400-1)						
S-LOC 14			700-1		373 (400-1)						
CIRCLING	900-1		920-1		1000-2		1000-2¼				
	573 (600-1)		593 (600-1)		673 (700-2)		673 (700-2¼)				

Diagram of HIRL Rwy 14-32. The runway is 6021' x 100'. The heading is 136°. The TDZE is 327.