

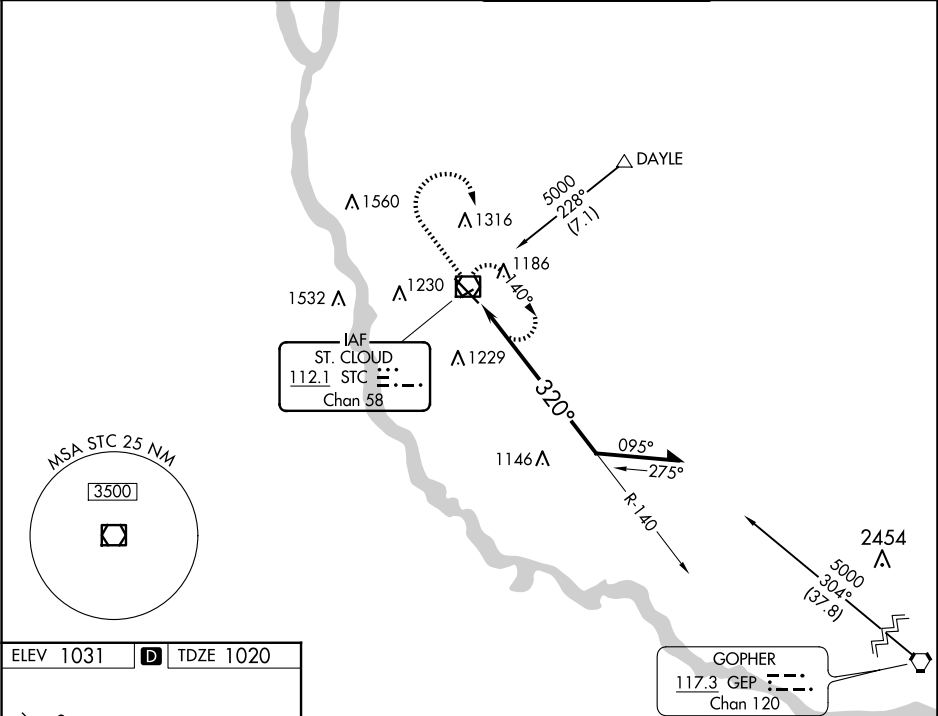
VOR/DME STC	APP CRS	Rwy Idg TDZE	7000 1020
112.1	320°	Apt Elev	1031
Chan 58			

VOR RWY 31

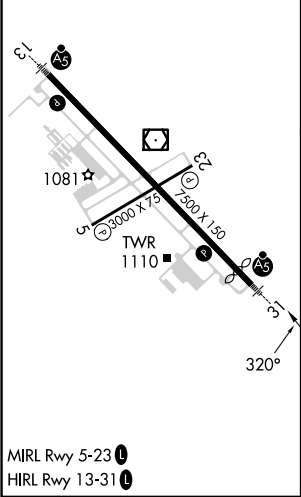
ST CLOUD RGNL (STC)

<div><div><div></div><div></div></div><div>For inop ALS, increase S-31 Cat C and D visibility to 1½ SM.</div></div>	<div><div><div></div><div></div></div><div>MALSR</div><div>MISSED APPROACH: Climb to 2700 then right turn direct STC VOR/DME and hold.</div></div>
---	--

ATIS 119.375	MINNEAPOLIS CENTER 121.05 235.775	ST. CLOUD TOWER ★ 118.25 (CTAF) 0	GND CON 123.75
-----------------	--------------------------------------	--------------------------------------	-------------------



ELEV 1031	D	TDZE 1020
-----------	---	-----------



MIRL Rwy 5-23 0
HIRL Rwy 13-31 0

<div><div><div></div><div></div></div><div>2700</div><div>STC</div><div>STC VOR/DME</div><div>STC 1.9</div><div>140°</div><div>320°</div><div>Remain within 10 NM</div><div>2700</div><div>1.2 NM</div></div>				
CATEGORY	A	B	C	D
S-31	1460-½	440 (500-½)	1460-¾ 440 (500-¾)	1460-1 440 (500-1)
CIRCLING	1500-1	469 (500-1)	1620-1½ 589 (600-1½)	1860-2¾ 829 (900-2¾)