
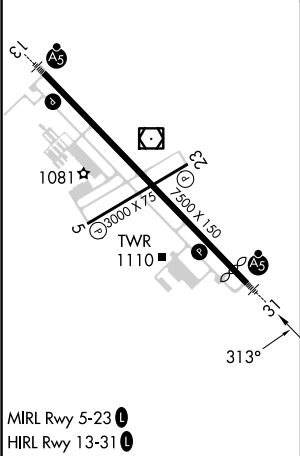
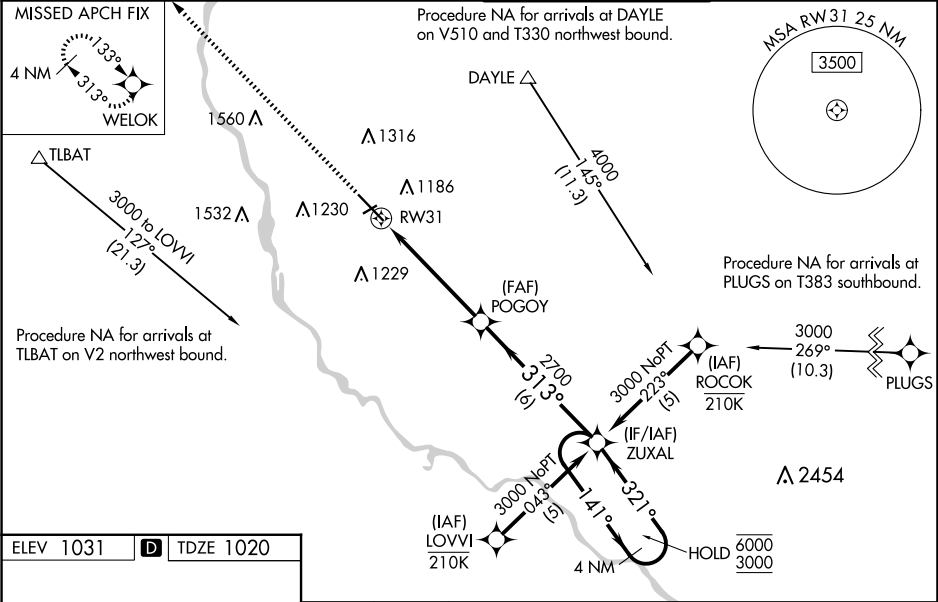


WAAS CH 61213 W31A	APP CRS 313°	Rwy Idg TDZE Apt Elev	7000 1020 1031
--	------------------------	-----------------------------	---

RNAV (GPS) RWY 31

ST CLOUD RGNL (STC)

RNP APCH - GPS.			<div>MALSR</div> <div></div>	MISSED APPROACH: Climb to 3000 direct WELOK and hold.
<div><div><div>▼</div><div>▲</div></div><div>Baro-VNAV and VDP NA when using Little Falls altimeter setting. For uncompensated Baro-VNAV systems, LNAV/VNAV NA below -21°C or above 54°C. For inop ALS when using Little Falls altimeter setting, increase LPV all Cats visibility to ¾ SM and LNAV/VNAV all Cats visibility to 1½ SM and LNAV Cats C and D visibility to 1½ SM. When local altimeter setting not received, use Little Falls altimeter setting, increase LPV DA to 1296 feet, increase LNAV/VNAV DA to 1503 feet and all visibilities ¼ SM; increase all MDAs 80 feet and LNAV visibility Cat C and D ¼ SM, and Circling visibility Cat C and D ¼ SM. For inop ALS, increase LNAV/VNAV visibility all Cats to 1½ SM.</div></div>				
ATIS 119.375	MINNEAPOLIS CENTER 121.05 235.775	ST. CLOUD TOWER ★ 118.25 (CTAF) 0	GND CON 123.75	



3000 WELOK		ZUXAL 4 NM Holding Pattern	
1.2 NM to RW31		141° 6000 3000	
RW31		GP 3.00° TCH 50	
1.2		3.9 NM	
POGOY 2700		6 NM	
CATEGORY		A B C D	
LPV DA		1220-½ 200 (200-½)	
LNAV/VNAV DA		1427-¾ 407 (400-¾)	
LNAV MDA		1460-½ 440 (500-½) 1460-¾ 440 (500-¾)	
CIRCLING		1500-1 469 (500-1) 1620-1½ 589 (600-1½) 1860-2¾ 829 (900-2¾)	