

WAAS CH 82013 W13A	APP CRS 133°	Rwy Idg TDZE Apt Elev	7000 1031 1031
--	------------------------	-----------------------------	---

RNAV (GPS) RWY 13

ST CLOUD RGNL (STC)

RNP APCH - GPS.

▼

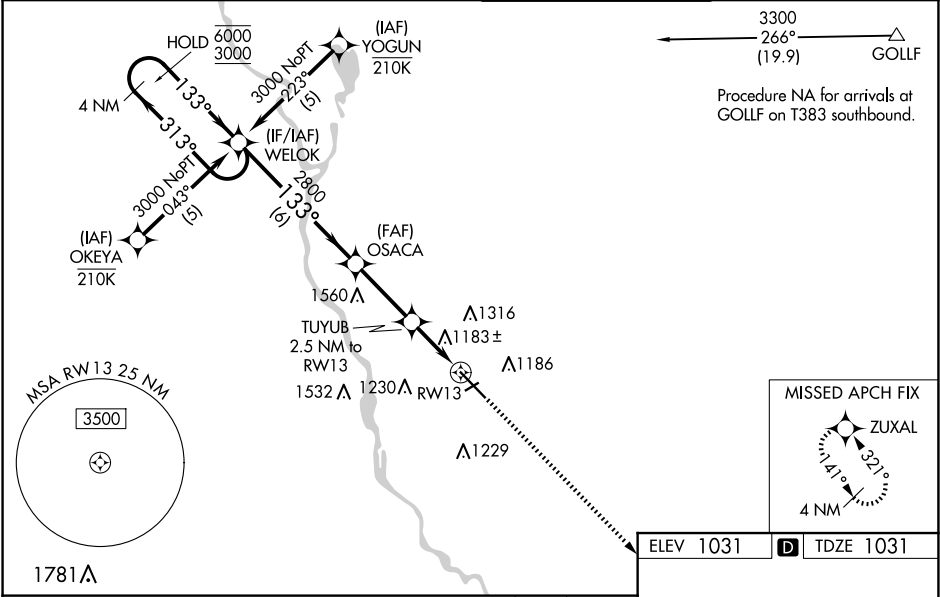
⚠

Baro-VNAV and VDP NA when using Little Falls altimeter setting. For uncompensated Baro-VNAV systems, LNAV/VNAV NA below -21 °C or above 54°C. When local altimeter setting not received, use Little Falls altimeter setting, increase LPV DA to 1307 feet; increase LNAV/VNAV DA to 1516 feet and all visibilities ¼ SM; increase all MDAs 80 feet and LNAV visibility Cat C and D ¼ SM, and Circling visibility Cat C and D ¼ SM. For inop ALS, increase LNAV/VNAV visibility all Cats and LNAV Cat C and D visibility to 1½ SM. When local altimeter not received and ALS inop, increase LPV visibility all Cats to ¾ SM, LNAV/VNAV visibility all Cats and LNAV Cat C and D to 1¾ SM.

MALSR

MISSED APPROACH:
Climb to 3000 direct ZUXAL and hold.

ATIS 119.375	MINNEAPOLIS CENTER 121.05 235.775	ST. CLOUD TOWER ★ 118.25 (CTAF) 0	GND CON 123.75
------------------------	---	---	--------------------------



WELOK 4 NM Holding Pattern 6000 ← 313° 3000 → 133° GP 3.00° TCH 49		OSACA 2800 TUYUB 2.5 NM to RW13 1.1 NM to RW13 RW13		3000 ZUXAL
6 NM		2.9 NM		1.4 NM
CATEGORY	A	B	C	D
LPV DA	1231-½		200 (200-½)	
LNAV/VNAV DA	1440-¾		409 (500-¾)	
LNAV MDA	1440-½	409 (500-½)	1440-¾	409 (500-¾)
CIRCLING	1500-1	469 (500-1)	1620-1½ 589 (600-1½)	1860-2¾ 829 (900-2¾)

ELEV 1031

D

TDZE 1031

MIRL Rwy 5-23 0

HIRL Rwy 13-31 0

TWR 1110

3000 X 75

1500 X 150