

LOC I-STD <u>111.9</u>	APP CRS 313°	Rwy Idg TDZE Apt Elev	7000 1020 1031
----------------------------------	------------------------	-----------------------------	---

ILS or LOC RWY 31
ST CLOUD RGNL (STC)

DME required.

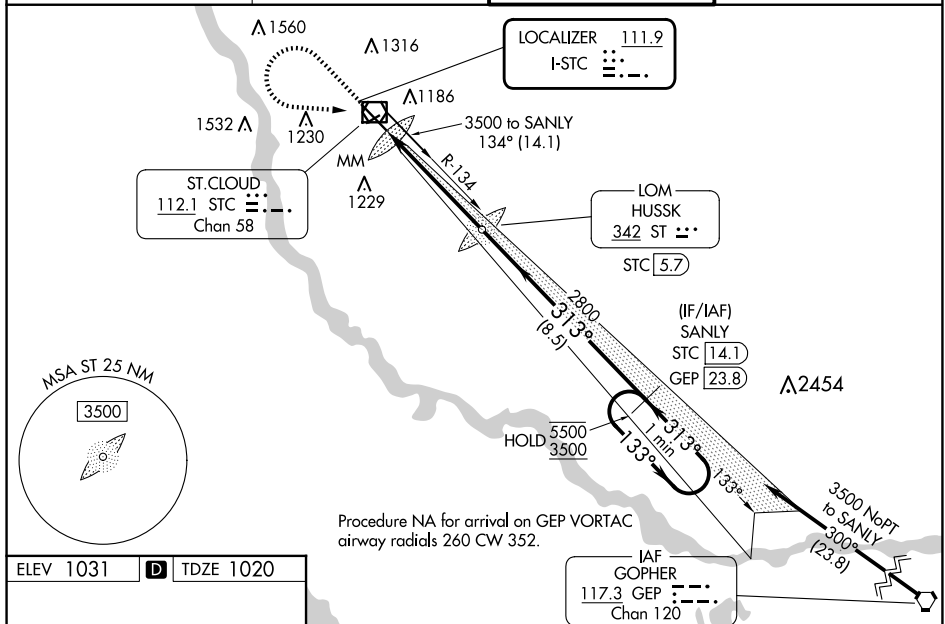
NA When local altimeter setting not received, use Little Falls altimeter setting, increase DA to 1296 feet, increase all MDAs 80 feet and S-LOC 31 visibility. Cats C and D ¼ SM, and Circling visibility Cats C and D ¼ SM. For inop ALS when using Little Falls altimeter setting, increase S-ILS-31 visibility to ½ SM and S-LOC-31 Cats C and D visibility to 1 ½ SM. VDP NA when using Little Falls altimeter setting. DME from STC VOR/DME. DME use requires simultaneous reception of I-STC and STC DME.

MALS R



MISSED APPROACH: Climb to 2800 then climbing left turn to 3500 direct STC VOR/DME and on STC VOR/DME R-134 to SANLY/STC VOR/DME 14.1 DME and hold.

<p>ATIS</p> <p>119.375</p>	<p>MINNEAPOLIS CENTER</p> <p>121.05 235,775</p>	<p>ST. CLOUD TOWER ★</p> <p>118.25 (CTAF) 0</p>	<p>GND CON</p> <p>123.75</p>
-----------------------------------	--	--	-------------------------------------



ELEV 1031	D	TDZE 1020
-----------	----------	-----------

[illegible]

ST. CLOUD, MINNESOTA

Amdt 4A 26DEC24

45°33'N-94°04'W

ST CLOUD RGNL (STC)
ILS or LOC RWY 31