

LOC I-BPM	APP CRS	Rwy Idg	7000
111.9	133°	TDZE	1031
		Apt Elev	1031

ILS or LOC RWY 13

ST CLOUD RGNL (STC)

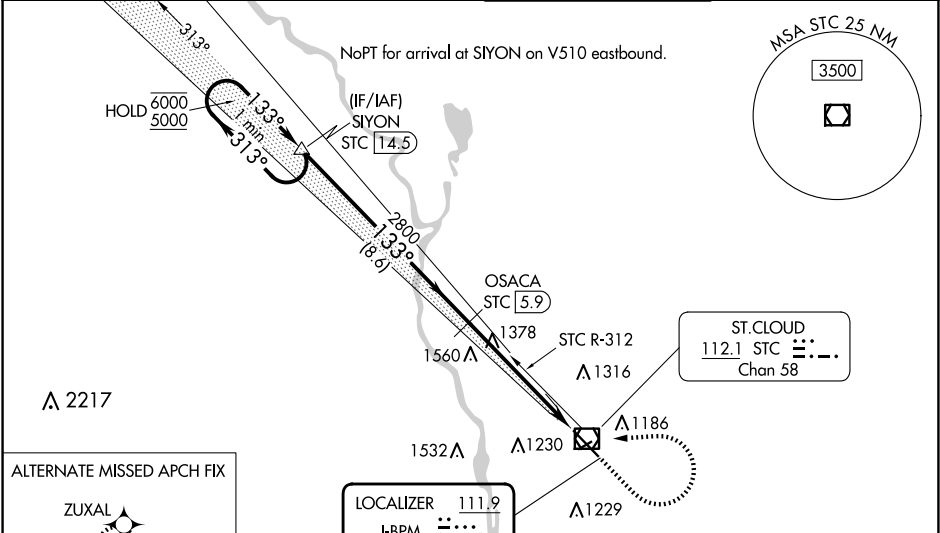
DME required.

**⚠** For inop ALS when using Little Falls altimeter setting, increase S-ILS-13 all Cats visibility to ¾ SM. When local altimeter setting not received, use Little Falls altimeter setting, increase DA to 1307 feet; increase all MDAs 80 feet and S-LOC 13 visibility Cats C and D ¼ SM, and Circling visibility Cats C and D ¼ SM. For inop ALS, increase S-LOC 13 Cats C and D visibility to 1¾ SM. DME from STC VOR/DME. DME use requires simultaneous reception of I-BPM and STC DME. VDP NA when using Little Falls altimeter setting.

MALSR

MISSED APPROACH: Climb to 2500 then climbing left turn to 5000 direct STC VOR/DME and on STC VOR/DME R-312 to SIYON/STC 14.5 DME and hold.

ATIS	MINNEAPOLIS CENTER	ST. CLOUD TOWER ★	GND CON
119.375	121.05 235.775	118.25 (CTAF) 0	123.75



One Minute Holding Pattern

2500	5000	STC	STC R-312	SIYON
↑	↶	□	△	

OSACA STC 5.9

2800

2800

8.6 NM

3.7 NM

1.8 NM

ELEV 1031

TDZE 1031

CATEGORY	A	B	C	D
S-ILS 13	1231-½ 200 (200-½)			
S-LOC 13	1640-½ 609 (700-½)		1640-1¾ 609 (700-1¾)	
CIRCLING	1640-1 609 (700-1)		1640-1¾ 609 (700-1¾) 1860-2¾ 829 (900-2¾)	

MIRL Rwy 5-23

HIRL Rwy 13-31

FAF to MAP 5.4 NM

Knots	60	90	120	150	180
Min:Sec	5:24	3:36	2:42	2:10	1:48

NC-1, 10 JUL 2025 to 07 AUG 2025

NC-1, 10 JUL 2025 to 07 AUG 2025