

WAAS CH 81829 W32A	APP CRS 320°	Rwy Idg 5701 TDZE 179 Apt Elev 187
--	------------------------	---

RNAV (GPS) RWY 32
STATESBORO-BULLOCH COUNTY (TBR)

RNP APCH-GPS.

T Circling to Rwy 6/24 ICA at night. Baro-VNAV ICA when using Sylvania altimeter setting. For uncompensated Baro-VNAV systems, ICA/VNAV ICA below -15°C or above 54°C.

A For inop ALS. Increase ICA/VNAV alt Cats visibility to ½ SM and ICA/VNAV C/D to 1½ SM. When local altimeter setting not received. Use Sylvania altimeter setting and increase LPV DA to 408 feet; increase ICA/VNAV DA to 490 feet; increase all MDAs 40 feet and ICA/VNAV visibility C/D ½ SM, and Circling visibility C/D ¼ SM. For inop ALS when using Sylvania altimeter setting, increase ICA/VNAV alt Cats visibility to ½ SM and ICA/VNAV C/D to 1½ SM.

MALSI

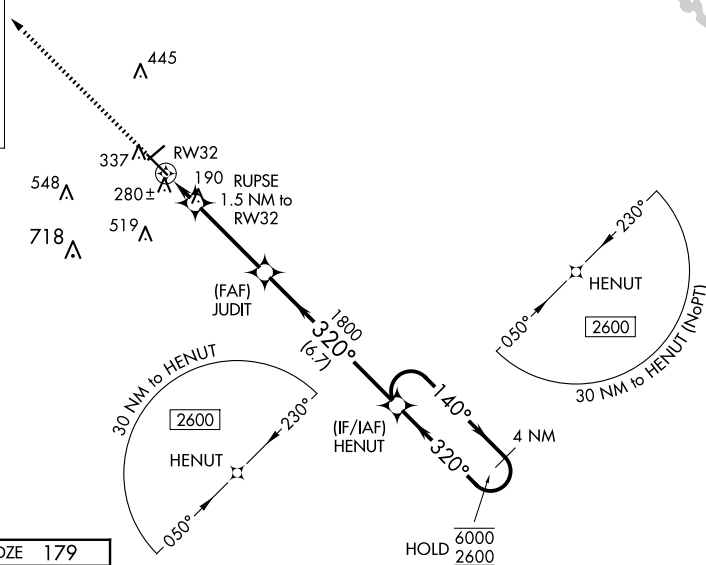
MISSED APPROACH:
Climb to 2600 direct
EPEDE and hold.

AWOS-3
119.025

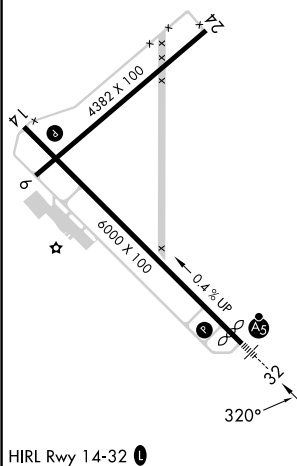
SAVANNAH APP CON★
118.4 354.0

UNICOM
122.725 (CTAF) **L**

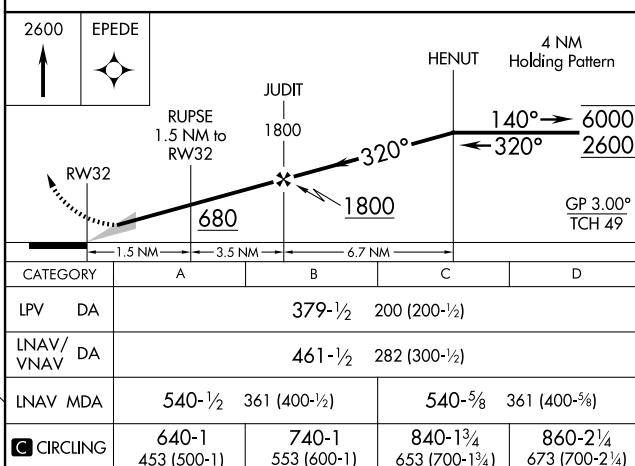
MISSED APCH FIX



ELEV	187	D	TDZE	179
------	-----	----------	------	-----



STATESBORO, GEORGIA
Amdt 4 29DEC22



STATESBORO-BULLOCH COUNTY (TBR)
RNAV (GPS) RWY 32

32°29'N-81°44'W

SE-4, 10 JUL 2025 to 07 AUG 2025

SE-4, 10 JUL 2025 to 07 AUG 2025