

WAAS
CH **49144**
W14A

APP CRS
140°

Rwy Idg
TDZE
Apt Elev
6000
181
187

RNAV (GPS) RWY 14

STATESBORO-BULLOCH COUNTY (TBR)

RNP APCH-GPS.

▼

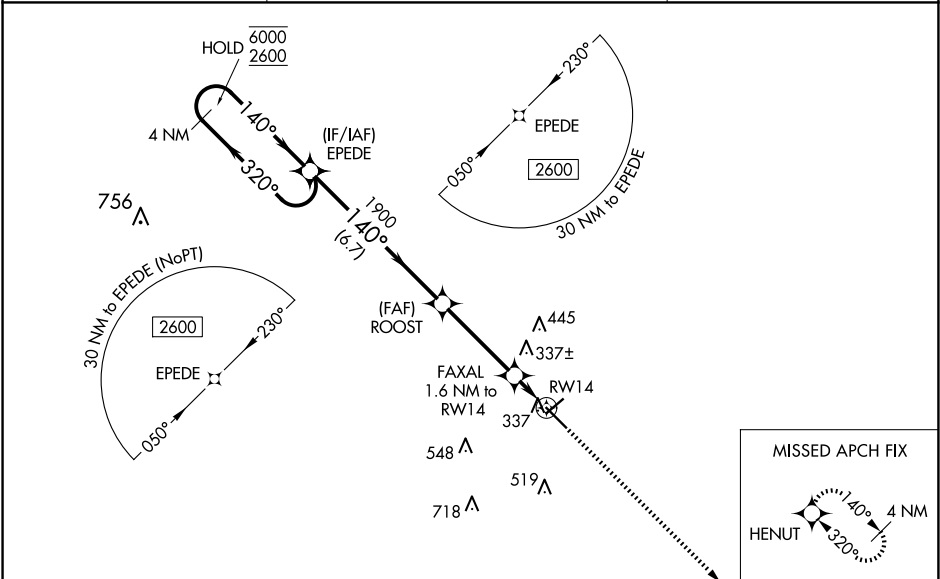
⚠

Circling to Rwy 6/24 NA at night. Baro-VNAV and VDP NA when using Sylvania altimeter setting.

Rwy 14 helicopter visibility reduction below $\frac{3}{4}$ SM NA. For uncompensated Baro-VNAV systems, LNAV/VNAV NA below -15°C or above 54°C. When local altimeter setting not received, use Sylvania altimeter setting and increase LPV DA to 525 feet and all visibilities $\frac{1}{8}$ SM. Increase LNAV/VNAV DA to 547 feet; increase all MDAs 40 feet and LNAV visibility Cat C/D $\frac{1}{4}$ SM, and Circling visibility Cat C $\frac{1}{4}$ SM.

MISSED APPROACH:
Climb to 2600 direct
HENUT and hold.

AWOS-3 119.025	SAVANNAH APP CON★ 118.4 354.0	UNICOM 122.725 (CTAF) 0
--------------------------	-----------------------------------------	-----------------------------------



ELEV 187	TDZE 181
----------	----------

VGSI and RNAV glidepath not coincident
(VGSI Angle 4.00/TCH 42).

4 NM Holding Pattern

GP 3.00° TCH 45

6000
2600

320°
140°

140°

1900

740

6.7 NM

3.6 NM

0.7 NM

0.9 NM

ROOST

FAXAL 1.6 NM to RW14

0.9 NM to RW14

HENUT

2600

140°

4382 X 100

6000 X 100

0.4% UP

HIRL Rwy 14-32 0

CATEGORY	A	B	C	D
LPV DA		496-7 $\frac{7}{8}$	315 (400-7 $\frac{7}{8}$)	
LNAV/VNAV DA		518-1	337 (400-1)	
LNAV MDA	600-1	419 (500-1)	600-1 $\frac{1}{8}$	419 (500-1 $\frac{1}{8}$)
CIRCLING	640-1 453 (500-1)	740-1 553 (600-1)	840-1 $\frac{3}{4}$ 653 (700-1 $\frac{3}{4}$)	860-2 $\frac{1}{4}$ 673 (700-2 $\frac{1}{4}$)