

WAAS CH 69229 W06A	APP CRS 063°	Rwy Idg TDZE Apt Elev	5001 82 82
--	------------------------	-----------------------------	---------------------------------------

RNAV (GPS) RWY 6

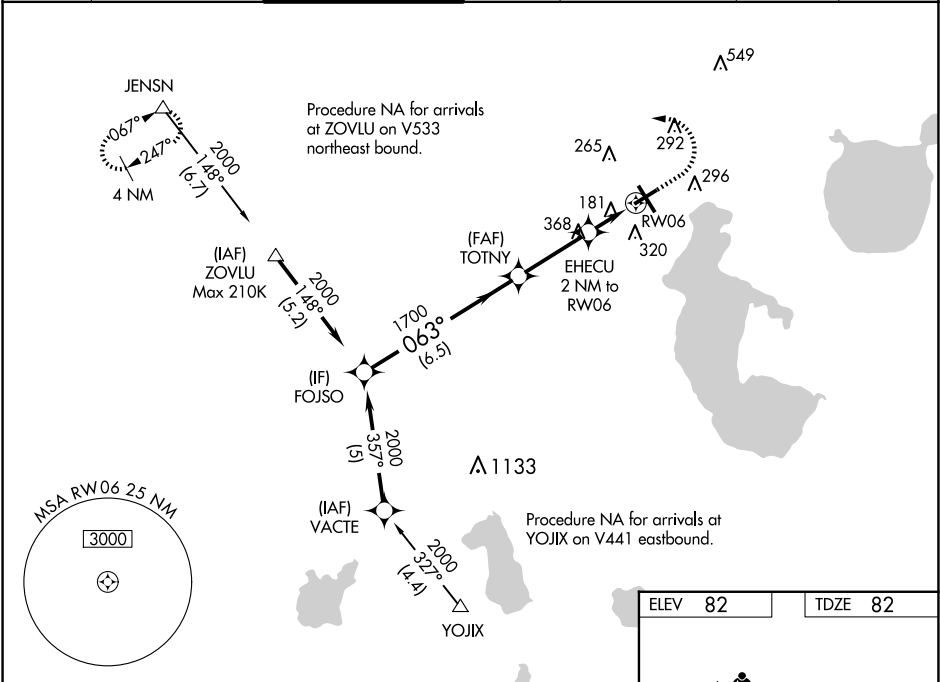
KISSIMMEE GATEWAY (ISM)

⚠

Baro-VNAV NA when using Orlando Intl altimeter setting. For uncompensated Baro-VNAV systems, LNAV/VNAV NA below -15°C (5°F) or above 43°C (109°F). DME/DME RNP-0.3 NA. Helicopter visibility reduction below ¾ SM NA. When local altimeter setting not received, use Orlando Intl altimeter setting and increase all LPV DA to 375, all LNAV/VNAV DA to 484, and all MDA 40 feet; increase LNAV/VNAV all Cats and LNAV Cat C/D visibility ½ SM, and Circling Cat C visibility ¼ SM.

MISSED APPROACH: Climb to 600 then climbing left turn to 4000 direct JENSN and hold, continue climb-in-hold to 4000.

ATIS 128.775	ORLANDO APP CON 119.4 351.9	KISSIMMEE TOWER ★ 124.45 (CTAF) 0	CLNC DEL 121.7	CLNC DEL 123.95 (when twr closed)	GND CON 121.7	UNICOM 122.95
------------------------	---------------------------------------	--	--------------------------	--	-------------------------	-------------------------



FOJOSO

TOTNY

EHECU

RW06

2000

1700

600

4000

063°

1700

*760

JENSN

GP 3.00°

TCH 45

*LNAV only.

6.5 NM

3 NM

2 NM

CATEGORY	A	B	C	D
LPV DA	348-1 266 (300-1)			
LNAV/VNAV DA	457-1¼ 375 (400-1¼)			
LNAV MDA	440-1 358 (400-1)			
CIRCLING	620-1 538 (600-1)		680-1½ 700-2 598 (600-1½) 618 (700-2)	

REIL Rwy 6, 24 and 33

MRL Rwy 15-33 and 6-24