

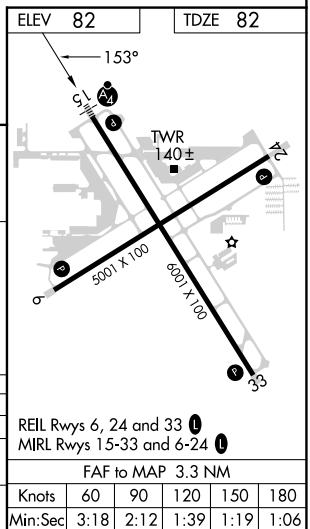
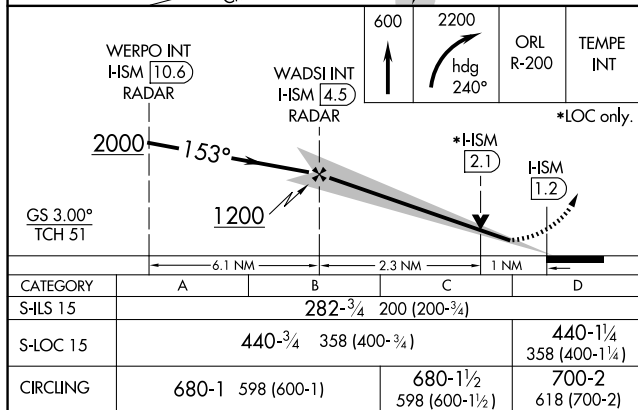
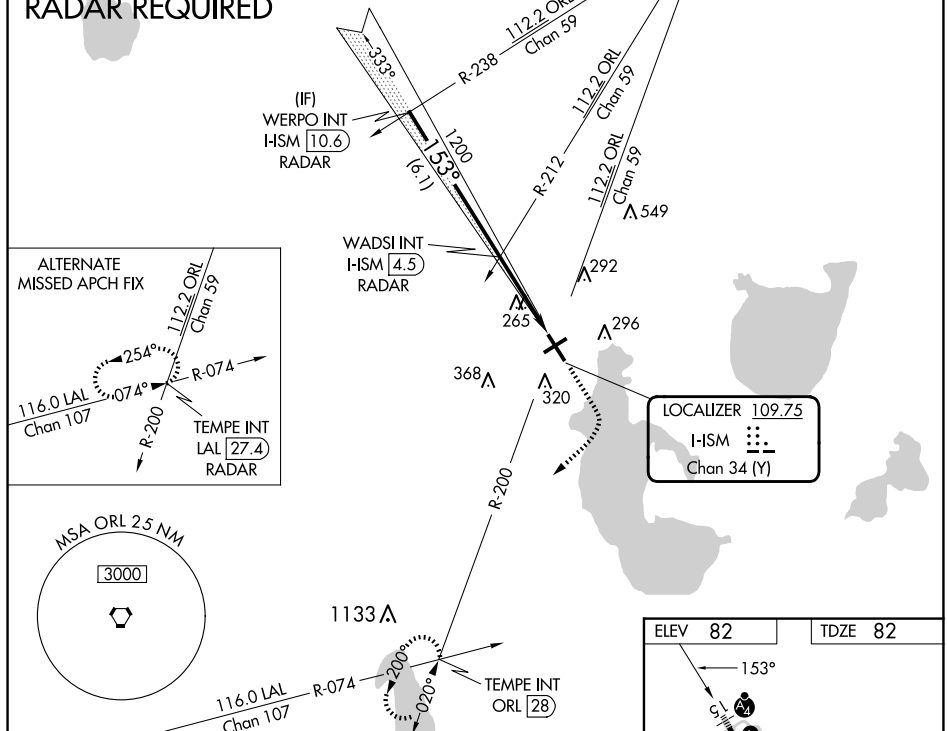
ILS or LOC RWY 15  
KISSIMMEE GATEWAY (ISM)

MALSF

**MISSED APPROACH:** Climb to 600 then climbing right turn to 2200 on heading 240° and ORL VORTAC R-200 to TEMPE INT/ORL 28 DME and hold.

<b>ATIS</b>	<b>ORLANDO APP CON</b>	<b>KISSIMEE TOWER ★</b>	<b>CLNC DEL</b>	<b>CLNC DEL</b>	<b>GND CON</b>	<b>UNICOM</b>
<b>128.775</b>	<b>119.4 351.9</b>	<b>124.45 (CTAF) 0</b>	<b>121.7</b>	<b>123.95</b> <small>(when twr closed)</small>	<b>121.7</b>	<b>122.95</b>

## RADAR REQUIRED



SE-3, 10 JUL 2025 to 07 AUG 2025

SE-3. 10 JUL 2025 to 07 AUG 2025