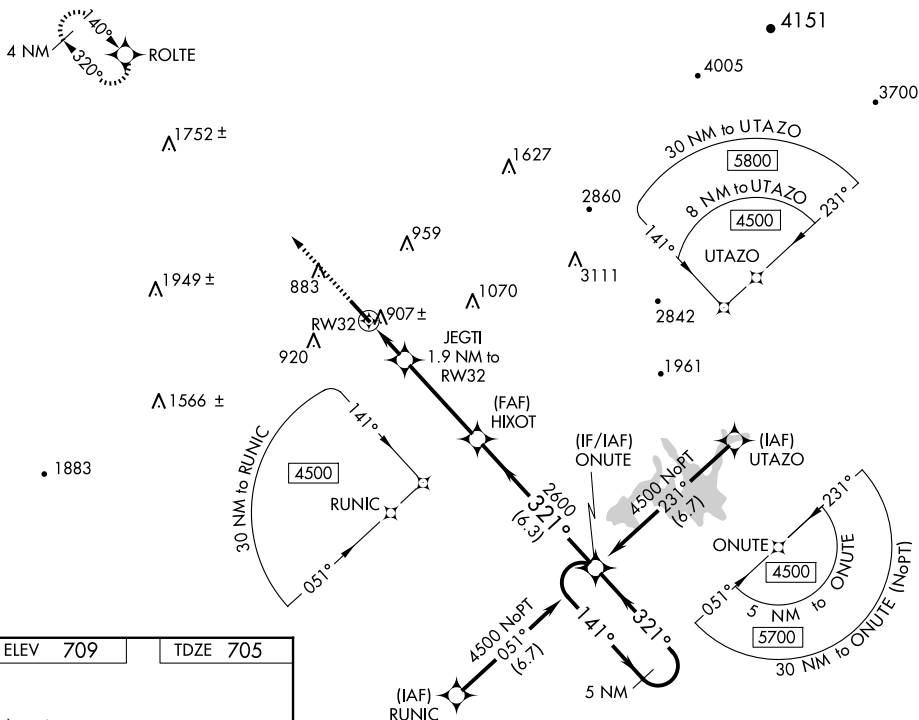


RNAV (GPS) RWY 32
DALTON MUNI (DNN)

T	Rwy 32 helicopter visibility reduction below 1 SM NA.
A	Straight-in Rwy 32 NA at night, Circling Rwy 32 NA at night.

MISSED APPROACH: Climb to 3800 direct ROLTE and hold, continue climb-in-hold to 3800.

UNICOM
122.975 (CTAF) **L**



DALTON MUNI(DNN)
RNAV (GPS) RWY 32