

WAAS CH <b>65801</b> <b>W14A</b>	APP CRS <b>140°</b>	Rwy Idg TDZE Apt Elev	<b>5496</b> <b>709</b> <b>709</b>
--	------------------------	-----------------------------	---


RNAV (GPS) RWY 14

DALTON MUNI (DNN)

⚠

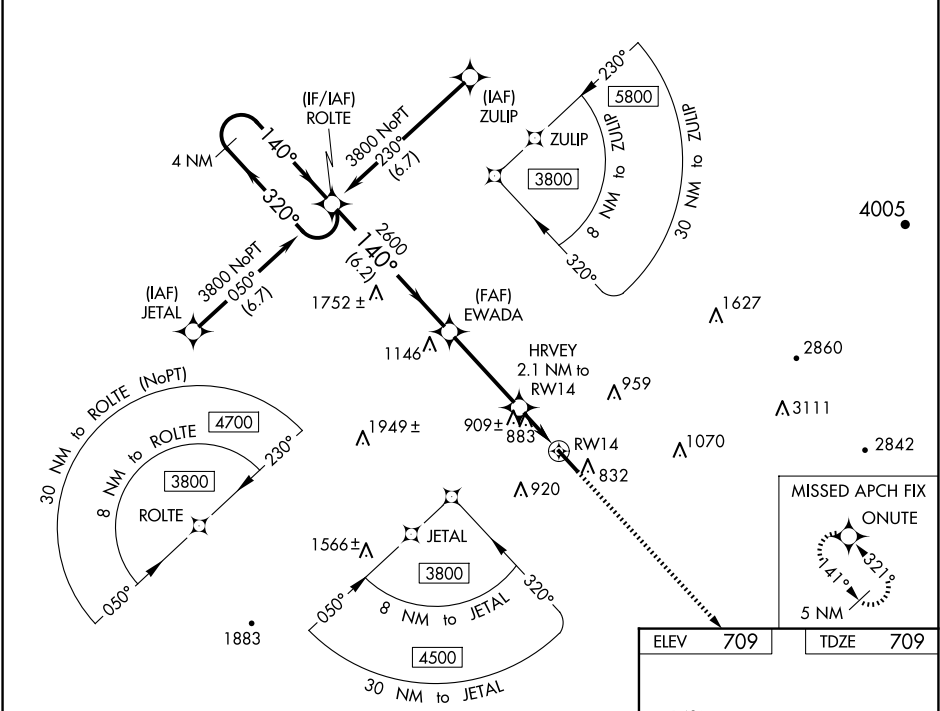
Circling to Rwy 32 NA at night. For uncompensated Baro-VNAV systems, LNAV/VNAV NA below -16°C (4°F) or above 54°C (130°F). DME/DME RNP-0.3 NA. Rwy 14 helicopter visibility reduction below ¾ SM NA. Inop table does not apply to LPV.

MALSR



MISSED APPROACH: Climb to 4500 direct ONUTE and hold, continue climb-in-hold to 4500.

AWOS-3PT <b>127.65</b>	CHATTANOOGA APP CON ★ <b>125.1 379.1</b>	CLNC DEL <b>120.25</b>	UNICOM <b>122.975 (CTAF) 0</b>
---------------------------	---	---------------------------	-----------------------------------



4 NM Holding Pattern

ROLTE

VGSI and RNAV glidepath not coincident (VGSI Angle 3.00/TCH 55).

EWADA

HRVEY 2.1 NM to RW14

ONUTE

GP 3.00° TCH 50

2600

1420

6.2 NM

3.7 NM

0.9 NM

1.2 NM

CATEGORY	A	B	C	D
LPV DA	959-¾ 250 (300-¾)			
LNAV/VNAV DA	1173-1½ 464 (500-1½)			
LNAV MDA	1160-¾ 451 (500-¾)	1160-7⁄8 451 (500-7⁄8)		
CIRCLING	1220-1 511 (600-1)	1260-1½ 551 (600-1½)	1420-2¼ 711 (800-2¼)	

