

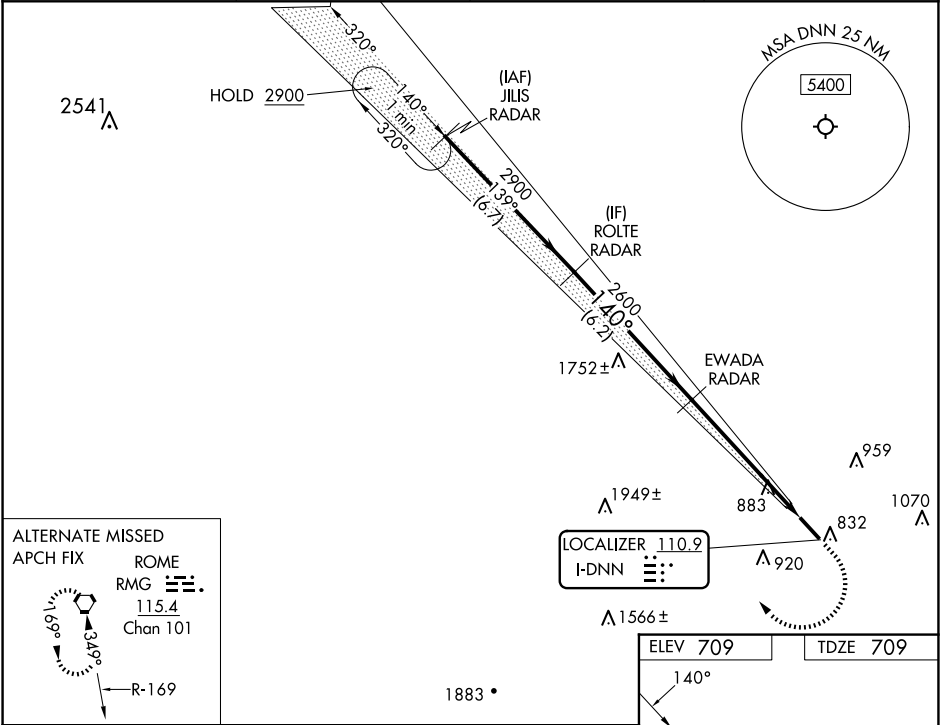



LOC I-DNN 110.9	APP CRS 140°	Rwy Idg TDZE Apt Elev	5496 709 709
---------------------------	------------------------	-----------------------------	---

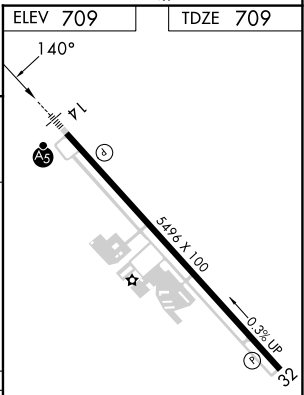

ILS or LOC RWY 14
DALTON MUNI (DNN)

RNP APCH - GPS. RADAR required.	MALSR	MISSED APPROACH: Climb to 1700 then climbing right turn to 3000 direct JILIS and hold.
 Circling to Rwy 32 NA at night. Autopilot coupled approach NA below 1200 MSL. Rwy 14 helicopter visibility reduction below 3/4 SM NA. Inop table does not apply to S-ILS 14. For inop ALS, increase S-LOC 14 Cat A/B visibility to 1 SM.		

AWOS-3PT 127.65	CHATTANOOGA APP CON ★ 125.1 379.1	CLNC DEL 120.25	UNICOM 122.975 (CTAF) 
---------------------------	---	---------------------------	---



VGSI and ILS glidepath not coincident (VGSI Angle 3.00/TCH 55).			
ROLTE RADAR		EWADA RADAR	
2900		2600	
GS 3.00° TCH 50		140°	
6.2 NM		5.8 NM	
CATEGORY	A	B	C
S-ILS 14	1074-3/4		365 (400-3/4)
S-LOC 14	1260-3/4	551 (600-3/4)	1260-1 1/8 551 (600-1 1/8)
 CIRCLING	1260-1	551 (600-1)	1340-1 3/4 631 (700-1 3/4) 1420-2 1/4 711 (800-2 1/4)

ELEV 709	TDZE 709
	
HIRL Rwy 14-32 	
FAF to MAP 5.8 NM	
Knots	60 90 120 150 180
Min:Sec	5:48 3:52 2:54 2:19 1:56

SE-4, 10 JUL 2025 to 07 AUG 2025

SE-4, 10 JUL 2025 to 07 AUG 2025