

WAAS CH <b>45717</b> <b>W20A</b>	APP CRS <b>202°</b>	Rwy Idg TDZE Apt Elev	<b>6450</b> <b>874</b> <b>874</b>
--	------------------------	-----------------------------	---

RNAV (GPS) RWY 20

MCMINN COUNTY (MMI)

RNP APCH - GPS.

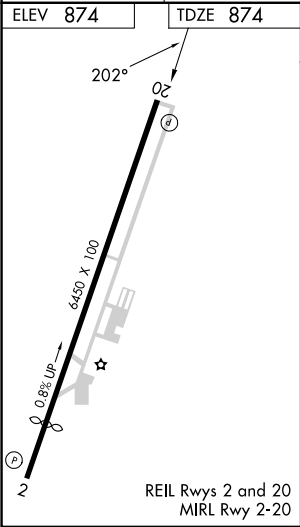
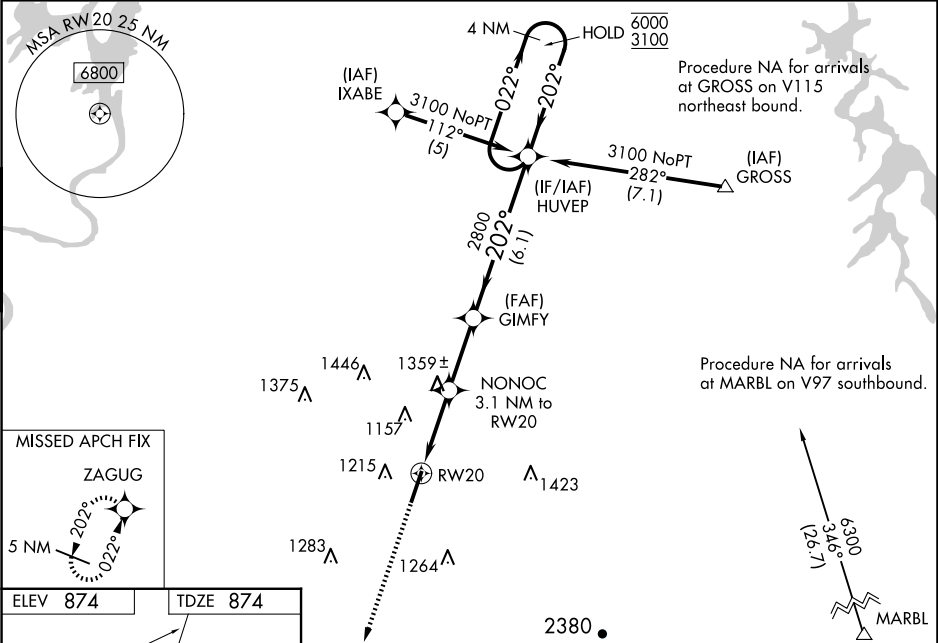
▼

⚠

Circling Rwy 2 NA at night. Baro-VNAV and VDP NA when using Mc Ghee Tyson altimeter setting.  
Rwy 20 helicopter visibility reduction below  $\frac{3}{4}$  SM NA. For uncompensated Baro-VNAV systems, LNAV/VNAV NA below -16°C or above 54°C. When local altimeter setting not received, use Mc Ghee Tyson altimeter setting: increase LPV DA to 1275 feet and visibility all Cats  $\frac{1}{8}$  SM; increase LNAV/VNAV DA to 1819 feet and visibility all Cats  $1\frac{1}{2}$  SM; increase all MDAs 120 feet and LNAV visibility Cat C and D  $\frac{1}{2}$  SM, and Circling visibility Cat A and C  $\frac{1}{4}$  SM.

MISSED APPROACH:  
Climb to 4100 direct ZAGUG and hold.

AWOS-3 <b>125.425</b>	KNOXVILLE APP CON <b>123.9 353.6</b>	UNICOM <b>122.8 (CTAF)</b>
--------------------------	---	-------------------------------



4100	ZAGUG	NONOC 3.1 NM to RW20	GIMFY 2800	HUVEP	4 NM Holding Pattern
2.2	0.9	2.7	6.1	GP 3.00° TCH 40	
CATEGORY	A	B	C	D	
LPV DA	1174-1	300 (300-1)			
LNAV/VNAV DA	1718-2 1/2	844 (900-2 1/2)			
LNAV MDA	1620-1 746 (800-1)	1620-1 1/4 746 (800-1 1/4)	1620-2 746 (800-2)		
CIRCLING	1620-1 746 (800-1)	1620-1 1/4 746 (800-1 1/4)	1620-2 1/4 746 (800-2 1/4)	1820-3 946 (1000-3)	