

WAAS CH 70501 W28A	APP CRS 279°	Rwy Idg TDZE Apt Elev	2502 108 108
--	------------------------	-----------------------------	---

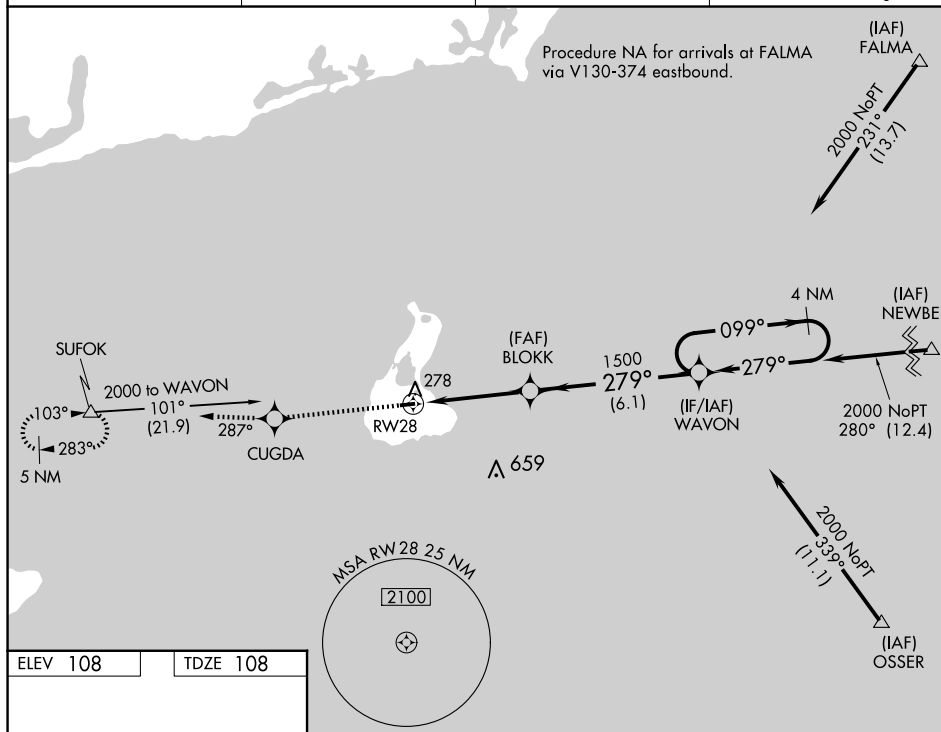
RNAV (GPS) RWY 28

BLOCK ISLAND STATE (BID)

T DME/DME RNP-0.3 NA. If local altimeter setting not received, use Westery State altimeter setting and increase all DAs/MDAs 40 feet. Baro-VNAV and **A** VDP NA when using Westery State altimeter setting. For uncompensated Baro-VNAV systems, LNAV/VNAV NA below -15°C (5°F) or above 54°C (130°F).

MISSED APPROACH: Climb to 1500 direct CUGDA and on track 287° to SUFOK and hold.

AWOS-3PT 134.775	PROVIDENCE APP CON ★ 125.75 319.2	CLNC DEL 120.1	UNICOM 123.0 (CTAF) 0
----------------------------	---	--------------------------	--



BLOCK ISLAND, RHODE ISLAND
Amdt 1A 27JUN13

41°10'N - 71°35'W

BLOCK ISLAND STATE (BID)
RNAV (GPS) RWY 28

NE-1, 10 JUL 2025 to 07 AUG 2025