

OXFORD, CONNECTICUT



AL-5785 (FAA)

24305

LOC/DME I-OC <b>109.55</b> Chan <b>32</b> (Y)	APP CRS <b>005°</b>	Rwy Idg <b>5301</b> TDZE <b>721</b> Apt Elev <b>730</b>
---	------------------------	---

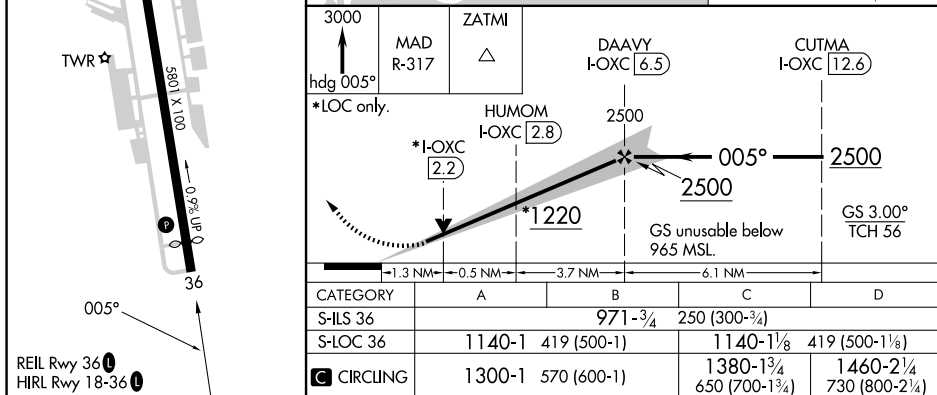
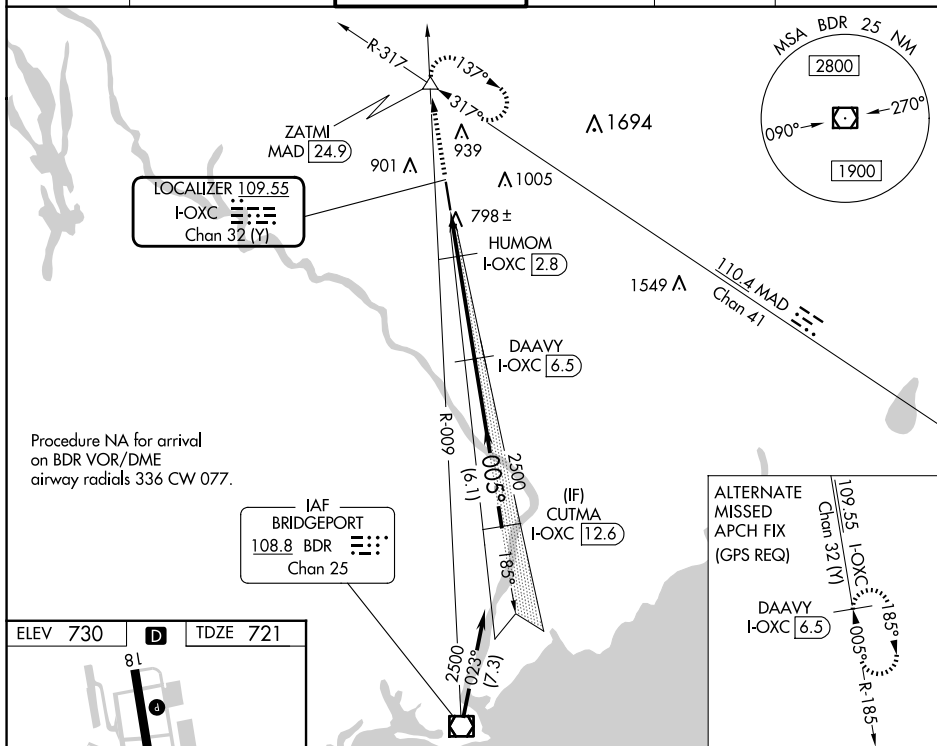
ILS or LOC RWY 36  
WATERBURY-OXFORD (OXC)

DME required.

	
 NA	Rwy 36 helicopter visibility reduction below $\frac{3}{4}$ SM NA.

**MISSED APPROACH:** Climb to 3000 on heading 005° and MAD VOR/DME R-317 to ZATMI INT/MAD 24.9 DME and hold. Continue climb-in-hold to 3000.

ATIS <b>132.975</b>	NEW YORK APP CON <b>124.075 343.65</b>	OXFORD TOWER ★ <b>118.475 (CTAF) 0</b>	GND CON <b>121.65</b>	CLNC DEL <b>121.65</b>	UNICOM <b>122.95</b>
------------------------	---	---	--------------------------	---------------------------	-------------------------



OXFORD, CONNECTICUT

Amdt 15 03JAN19

41°29'N-73°08'W

WATERBURY-OXFORD (OXC)  
ILS or LOC RWY 36

NE-1, 10 JUL 2025 to 07 AUG 2025

NE-1, 10 JUL 2025 to 07 AUG 2025