

APP CRS
143°

Rwy Ldg
TDZE
Apt Elev
3335
121
121

RNAV (GPS) RWY 14
NORTHAMPTON (7B2)

▼

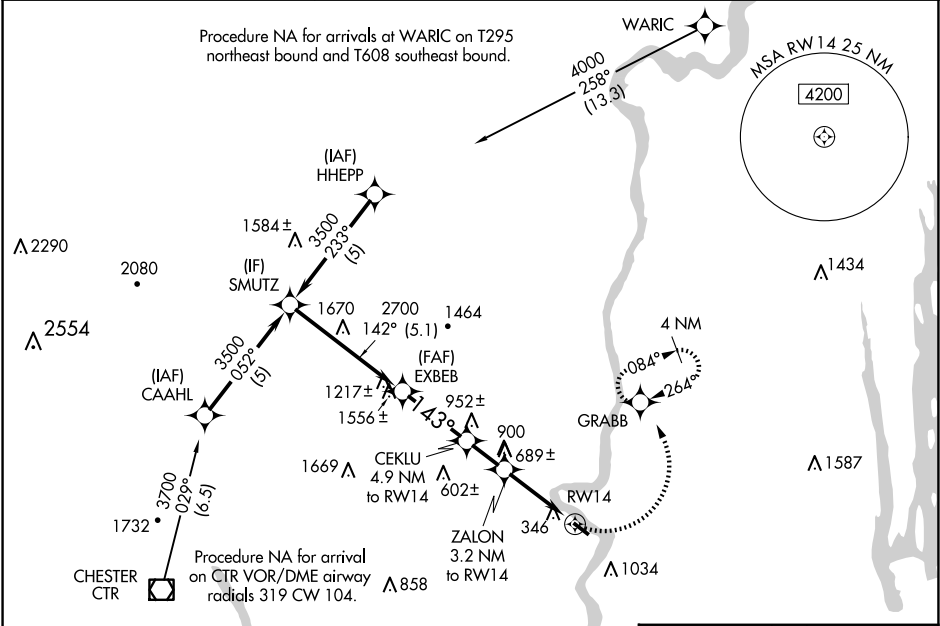
NA

-24°C

Procedure NA at night. Obtain local altimeter setting on CTAF; when not received, use Windsor Locks altimeter setting. Rwy 14 helicopter visibility reduction below 1 SM NA.

MISSED APPROACH: Climbing left turn to 3000 direct GRABB and hold, continue climb-in-hold to 3000.

| | | |
|--|--------------------------|---------------------------------|
| BRADLEY APP CON 125.35 281.5 | CLNC DEL 133.6 | UNICOM 122.7 (CTAF) 0 |
|--|--------------------------|---------------------------------|



VGSI and descent angles not coincident (VGSI Angle 4.50/TCH 60).
* 1820 when using Windsor Locks altimeter setting.
** 1260 when using Windsor Locks altimeter setting.

3000

GRABB

| | | |
|--|-------------------------|---------------------------|
| | ELEV 121 | TDZE 121 |
| SMUTZ | EXBEB | CEKLU |
| 3500 | 2700 | 1740 |
| 142° | 143° | 3.07° |
| 5.1 NM | 2.9 NM | 1.7 NM |
| 2.9 NM | 3.2 NM | 3.2 NM |
| Procedure Turn NA | | |
| CATEGORY | A | B |
| LNVA MDA | 940-1 819 (900-1) | 940-1¼ 819 (900-1¼) |
| CIRCLING | 940-1¼ 819 (900-1¼) | 1400-1½ 1279 (1300-1½) |
| WINDSOR LOCKS ALTIMETER SETTING MINIMUMS | | |
| LNVA MDA | 1020-1¼ 899 (900-1¼) | NA |
| CIRCLING | 1020-1¼ 899 (900-1¼) | 1460-1½ 1339 (1400-1½) |

MIRL Rwy 14-32 0